

# Taiwan Travel Guide for Muslim



**Taiwan**

THE HEART OF ASIA

# Index

Preface	01
General Information about Taiwan	02
Muslims in Taiwan	06
Special Feature of Taiwan	07
Recommended Places in Northern Taiwan	14
Recommended Places in Central Taiwan	26
Recommended Places in Southern Taiwan	32
Recommended Places in Eastern Taiwan	42
Recommended Itinerary	52
Popular Gifts	56
Travel Information	58



# Preface

Taiwan is situated in East Asia, on the northwestern edge of the Pacific Ocean. It is a long and narrow island with diverse terrain, forest, agricultural land, and marine ecology. Not only does it offer beautiful scenery, it also has the unique cultures of different ethnic groups, together forming its unsurpassed humanistic charm.

In an effort to attract more Muslim visitors, Taiwan has been actively working to build a Muslim-friendly environment. As a result, the headquarters of all national scenic areas, Taiwan Taoyuan International Airport, Taiwan Railway Administration's Taipei, Kaohsiung, and Hualien stations, the High Speed Railway's Taichung Station, and the national freeway's Qingshui Service Area all have Muslim prayer rooms and washing facilities. Many hotels also provide facilities to serve Muslim visitors.

With respect to food service, in cooperation with the Chinese Muslim Association, Halal, Muslim, and Muslim-friendly labels have been introduced. As of early 2017, there were 100 certified Halal restaurants, Muslim-friendly restaurants, and central kitchens in Taiwan, allowing Muslim visitors to feel at home and eat without worry.

In 2016, Mastercard announced the MasterCard-Crescent Rating Global Muslim Travel Index (GMTI). In its survey, Taiwan ranked 7<sup>th</sup> among non-IOC countries, and 1st for travel safety, showing that the island is a new travel destination, attracting much attention in the Muslim world.

Surrounded by sea, Taiwan has friendly people, lovely natural scenery, diverse culture, and a carefully-constructed visitor-friendly travel environment. In this handbook, you will find introductions to distinctive attractions and stunning travel experiences across Taiwan, as well as information about food options and fine gifts, helping you to enjoy your visit to Taiwan to the fullest.

Taiwan welcomes you with open arms!

# Taiwan Map

Taipei Songshan Airport

Matsu (Lianjiang County)

Kinmen County

Taiwan Taoyuan International Airport

Penghu County

Tainan Airport

Kaohsiung International Airport



# General Information about Taiwan

## Profile

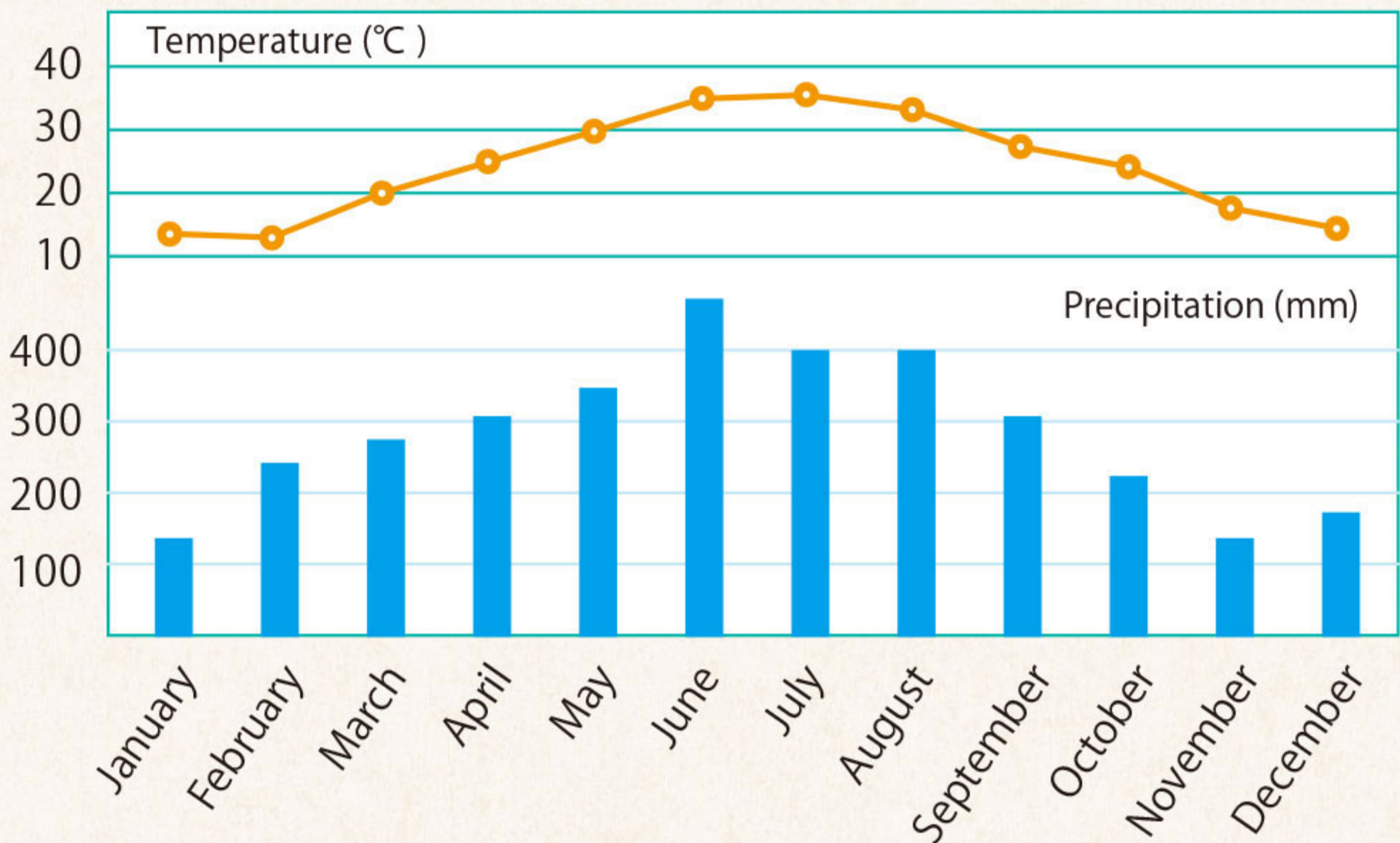
Official Language: Mandarin Chinese

Area: 36,000 square kilometers

Population: 23.54 million

## Climate

Taiwan is mostly sub-tropical. The climate differs through the four seasons and between the north and south. The average annual temperature is 22 degrees Celsius; in winter, the average is 12-17 degrees and in summer over 30 degrees. Southern Taiwan has a tropical climate and is thus warmer than the north; there is also less difference between winter and summer temperatures in the south.



## Voltage

The voltage in Taiwan is 110V and frequency is 60 Hz. Plugs usually have two straight holes. If electrical devices are brought in from overseas, please check in advance if the voltage and frequency are suitable or bring an adapter.

## Currency

Taiwan's currency is the New Taiwan Dollar (NT\$). The denominations in bills are NT\$2,000, 1,000, 500, 200, and 100. The coins are NT\$50, 10, 5, and 1.

Department stores, shopping malls, and restaurants accept major international credit cards. Money exchange services are provided at airports, hotels, main tourist attractions, and designated foreign-exchange banks.

# Transportation Information



## Taiwan Railways

The Taiwan Railways' transportation network is spread throughout the island with many branch lines reaching big and small towns. There are many stations, which make it convenient for transferring to different transportation systems. The fares vary depending on the type of train. There are Ziqiang Limited Express, Juguang Limited Express, Fuxing Limited Express, shuttle trains, and local trains. Travelers can decide which one to choose based on their destination, schedule, and travel budget. (Telephone or online ticket purchase is available.)

- **Taiwan Railways Administration**

- ☎ Customer service hotline: 0800-765-888

- 🌐 Online ticket purchase: <http://railway.hinet.net>



## High Speed Rail

Taiwan High Speed Rail is one of the major transportation systems in western Taiwan. There are eight stations along the route – Nangang, Taipei, Banqiao, Taoyuan, Hsinchu, Miaoli, Taichung, Changhua, Yunlin, Chiayi, Tainan, and Zuoying (Kaohsiung). The Taoyuan, Hsinchu, Taichung, Chiayi, and Tainan stations have fast bus connections for transferring passengers, and the Taichung, Chiayi, Tainan, and Zuoying stations also offer transportation connection services.

- **Taiwan High Speed Rail**

- ☎ Customer service hotline: 886-2-4066-3000

- 🌐 [www.thsrc.com.tw](http://www.thsrc.com.tw)



## Taipei Metro



## Kaohsiung Metro

The five lines of the Taipei Metro (MRT) system are Wenhua, Tamsui-Xinyi, Songshan-Xindian, Zhonghe-Xinlu, and Bannan (Banqiao-Nangang). Each metro station has coin-operated ticket machines for purchasing tickets (each station also has change machines). Fares for one-way tickets (depending on the distance traveled between stations) vary from NT\$20 to NT\$65.

Kaohsiung Metro currently has three operating lines – Red Line, Orange Line, and LRT. Fares vary from NT\$20 to NT\$60.

At both Taipei and Kaohsiung stations you can buy a “One-day ticket” priced at NT\$150. The ticket has to be used on the day of purchase between 6am and 12 midnight, with unlimited rides and restriction of one person per ride.

- **Taipei Metro**

- ☎ Customer service hotline: 886-2-218-12345

- 🌐 [www.metro.taipei](http://www.metro.taipei)

- **Kaohsiung Metro**

- ☎ Customer service hotline: 886-7-793-8888

- 🌐 [www.krtco.com.tw](http://www.krtco.com.tw)



## MRT Taoyuan International Airport Line

The MRT Taoyuan International Airport Line connects downtown Taipei and Taiwan Taoyuan International Airport. Trains are divided into Express and Commuter trains. One of each type departs every 15 minutes. The journey on an Express Train from Taipei Main Station to the airport takes about 35 minutes, while a Commuter Train takes about 50 minutes. A one-way ticket costs NT\$160. Level B1 of the airport line's A1 Station (Taipei Main Station) has an in-town check-in service, one of only five downtown stations in the world to offer this type of service. At present, only travelers flying with China Airlines, EVA Air, Mandarin Airlines, and Uni Air can make use of this service.

### Taoyuan Airport MRT – Basic Information

[www.tymetro.com.tw](http://www.tymetro.com.tw)

Operating Hours: 6am ~ 11pm

Full Fare One Way: NT\$160

Train Types: Commuter Train (blue), Express Train (purple)

Headway: One train every 7.5 minutes (one ordinary train and one direct train every 15 minutes)



## Taiwan Tourist Shuttle

The Taiwan Tourist Shuttle ([en.taiwantrip.com.tw](http://en.taiwantrip.com.tw)) is a bus service specifically for tourists, with bus stops located at all of the major Taiwan Railways and Taiwan High Speed Rail stations near major tourist attractions for convenient passenger pick-up and drop-off. For those who don't like to drive long distances or join a group tour, the Taiwan Tourist Shuttle is an ideal transportation option if you want to plan your own itinerary. It's an easy and relaxing way to travel.

Customer service hotline: 0800-011-765

[www.taiwantrip.com.tw](http://www.taiwantrip.com.tw)



## Taiwan Tour Bus

The Taiwan Tour Bus service is a set-schedule tour bus operation with quality service and high standards. Currently, there are 80 different Taiwan Tour Bus itineraries. Passengers must make reservations in advance. Destinations include all of the popular tourist spots. The fare for each route includes transportation, guide, and insurance. There are fixed departure times daily.

[www.taiwantourbus.com.tw](http://www.taiwantourbus.com.tw)

24-hour Mandarin, English, Japanese, and Korean free travel advisory services and toll-free travel hotline (Call Center): 0800-011-765



## Taxi

Taiwan's yellow taxis are easy to recognize. The taxi fares differ between each city and county. Major cities like Taipei and New Taipei usually use meters, and the fare is NT\$70 for the first 1.25 km and then increases by NT\$5 every 200 meters. At nighttime (11pm~6am), the fare is increased by NT\$20. In some cities the meters are not used, so it's best to determine the fare with the driver before getting in the taxi.

# Muslims in Taiwan



Photo/ Vintagejhan

Islam in Taiwan can be traced back to the 1600s, however, the number of Muslims only reached a significant scale when a wave of immigrants moved from mainland China to Taiwan in 1949 at the end of the Chinese Civil War. At present, Taiwan has an estimated 20,000-40,000 Muslims who are citizens and at least 200,000 foreign Muslims, mostly from Southeast Asia. The Chinese Muslim Association is the most important Islamic organization in Taiwan. Apart from expounding the Koran, it also represents the Muslims of Taiwan in international exchange with fellow Muslims in other countries.

There are seven mosques in Taiwan, all located in downtown areas. The oldest is Taipei Grand Mosque. Completed in 1960, it is the best-known and most important place of worship for Muslims in Taiwan.

## Mosques in Taiwan

### Taipei Grand Mosque

No. 62, Sec. 2, Xincheng S. Rd.,  
Da'an Dist., Taipei City  
(02) 2321-9445

### Taipei Cultural Mosque

No. 3, Ln. 25, Sec. 1, Xinhai Rd.,  
Zhongzheng Dist., Taipei City  
(02) 2367-5421

### Longgang Mosque

No. 216, Longdong Rd., Zhongli  
Dist., Taoyuan City  
(03) 456-1234

### At-Taqwa Mosque

No. 8-2, Zili 1st Street, Dayuan  
Dist., Taoyuan City  
(03) 384-0539

### Taichung Mosque

No. 457, Dadun S. Rd., Nantun  
Dist., Taichung City  
(04) 2473-2519

### Tainan Mosque

No. 12, Aly. 34, Ln. 77, Sec.  
3, Zhonghua E. Rd, East Dist.,  
Tainan City  
(06) 288-1686

### Kaohsiung Mosque

No. 11, Jianjun Rd., Lingya Dist.,  
Kaohsiung City  
(07) 749-6812

## Chinese Muslim Association

[www.cmainroc.org.tw](http://www.cmainroc.org.tw)



Special Feature of Taiwan

# The Beauty of Nature



With its warm subtropical/tropical climate and varying terrain, from coastal plains to high mountains, all kinds of beautiful flowers grow in Taiwan. During the blooming seasons of these flowers exhibitions and festivals are held across Taiwan.

JAN	1	1	New Taipei City Cherry Blossom Season (New Taipei City, Wulai Special Scenic Area)
FEB		2	Formosan Aboriginal Culture Village Cherry Blossom Season (Formosan Aboriginal Culture Village, Nantou County)
MAR	4	3	Wuling Farm Cherry Blossom Season (Wuling Farm, Taichung City)
APR		2	Yangmingshan Flower Season (Yangmingshan National Park, Taipei City)
MAY			CKS Shilin Residence Rose Festival (CKS Shilin Residence, Taipei City)
JUN		3	Zhuzihu Calla Lily Festival (Yangmingshan National Park, Taipei City)
JUL			Alishan Cherry Blossom Season (Alishan National Scenic Area, Chiayi County)
AUG	5	4	Hakka Tung Blossom Festival (Cities and counties in northern and central Taiwan)
SEP			Hualien Daylily Festival (Mt. Liushidan and Mt. Chike, Hualien County)
OCT		5	Taitung Taimali Daylily Festival (Taimali Township, Taitung County)
NOV	6		CKS Shilin Residence Chrysanthemum Show (CKS Shilin Residence, Taipei City)
DEC		6	

## 2018 Taichung World Flora Exposition

A major flower show in Taiwan will be held from November 3, 2018 to April 24, 2019 in Taichung City, lasting a total of 173 days. Its themes are ecological conservation, refined agriculture, and environmental construction. It will have seven pavilions in three exhibition areas, which will cover an area of 60.88 hectares. The three exhibition areas will be Houli Horse Ranch & Forest Park Area, Waipu Yongfeng Park Area, and Fengyuan Huludun Park.



<http://2018floraexpo.tw>

## Special Feature of Taiwan Luxury Vacation Experiences



Taiwan has a highly developed hotel industry and a large number of high-class hotels with international standards. Whether they are hot-spring hotels, resort hotels or downtown boutique hotels, the facilities and services offered always satisfy the guests. Quite a few hotels have been recognized in The World Luxury Hotel Awards. For example, in 2016, Howard Beach Resort Kenting, Grand Mayfull Hotel Taipei, Fleur de Chine Hotel Sun Moon Lake, and Mandarin Oriental Taipei all won a World Luxury Hotel Award.



### Mandarin Oriental Taipei

Situated in a prosperous part of downtown Taipei, the Mandarin Oriental has a number of elegant restaurants and also the largest hotel hydrotherapy center in Taiwan.

### Hotel Royal Chiaohsi

This hotel is located in Yilan County's Jiaoxi Township, known as the "home of hot springs" in eastern Taiwan. The modern hotel has all the charm of a Japanese hot-spring hotel.

### Fleur de Chine Sun Moon Lake

Sun Moon Lake in central Taiwan is famed for its beautiful lake-and-mountain scenery. Fleur de Chine is the first high-class hotel at the lake, offering natural hot-spring facilities.

### Howard Beach Resort Kenting

Located in Kenting National Park at the southern tip of Taiwan, this hotel faces the ocean and has mountains at its back. The hotel buildings have a Mediterranean architectural style.

### Grand Mayfull Taipei

Located in Dazhi District of Taipei City, this boutique hotel has modern artworks on display all around.

For more information about these and other hotels, visit ►



## Special Feature of Taiwan

# Cosmetic Surgery and Health Examination Travel



The high standard of medical care in Taiwan is renowned the world over. Taiwan is also known for highly-developed cosmetic surgery and health examination industries offering not only advanced equipment and first-class techniques, but also reasonable prices. As medical care is also characterized by the enthusiastic, friendly, and attentive service for which the Taiwanese are justifiably known, these sectors are internationally competitive.

With cosmetic surgery and health examination now linked to tourism in Taiwan, many travel agencies are cooperating with hospitals and clinics, offering a wide range of related travel products. Hotels are also cooperating with medical units, combining high-class accommodation with health care so that travelers can receive a variety of medical services according to their personal needs while enjoying a 5-star hotel vacation experience.

- Jaringan Medis Internasional Taiwan
- [www.medicaltravel.org.tw](http://www.medicaltravel.org.tw)

## Premium Spas



Taiwan's spa industry is world class in terms of business size and service. Downtown spas and spas in scenic tourist areas are connected to local hot springs and cold springs. In recent years, premium spa brands have also set up shop in hotels and resorts. Many women use their vacation time to stay in such hotels specifically to enjoy luxury spa services. Quite a few operators have also moved into the men's spa market. In addition, many spa operators offer healthy food, aromatherapy, yoga, and even Zen meditation to enrich the spa experience for guests.

## Special Feature of Taiwan

# Theme Parks



At present, there are 24 theme parks in Taiwan, nine in the north (New Taipei City, Taoyuan City, Hsinchu County, Miaoli County), six in central Taiwan (Taichung City, Nantou County, Yunlin County), six in the south (Tainan City, Kaohsiung City, Pingtung County), and three in the east (Yilan County and Hualien County).

These theme parks differ considerably from each other. Besides offering different amusement facilities, each also has its own theme. Window On China for example has miniature models of the world's most famous landmarks, West Lake Resortopia has a fairy-tale style, and Lefoo Village Theme Park and Wanpi World Safari Zoo allow you to get close to animals. There is also Lihpao Land with its emphasis on water rides, Janfusun Fancyworld with its wide variety of thrill rides, Formosan Aboriginal Culture Village, with its focus on Taiwan's indigenous cultures, and Jianshanpi Jiangnan Resort and Sun-Link-Sea Forest and Nature Resort focusing on the natural environment.

Many of these theme parks have hotels, restaurants, and shops to meet the needs of visitors. With varied themes and a wide range of facilities, theme parks offer diverse leisure fun for families and also couples who want to spend a romantic vacation.

- For more information about Taiwan's theme parks
- <http://themepark.net.tw>



## Special Feature of Taiwan

# Nature Experiences on Leisure Farms



Leisure-farm travel has become very popular with modern travelers. On a leisure farm, you can get close to nature, eat healthy food and drink refreshing beverages made from the farm's own produce without worry, and spend the night in comfy accommodation surrounded by nature. Leisure farms provide a variety of activities such as fruit-picking, simple processing of farm produce, and DIY courses, making them perfect for fun family holidays.

To further raise the service level of leisure farms in Taiwan, the Taiwan Leisure Farms Development Association holds annual certification evaluations covering facilities, services, and activities. In 2016, 37 farms were certified, twelve in northern Taiwan, seven in central Taiwan, eight in southern Taiwan, and ten in eastern Taiwan.

As the number of Muslim visitors from Southeast Asia has increased in recent years, many leisure farms now accommodate the needs of these travelers. At present, the following farms are halal-certified: Chienhu Chuanchi Ecological Farm in New Taipei City, Zhuo Ye Cottage in Miaoli County, Forest 18 and Tai Yi Red Maple Resort in Nantou County, Long Yun Leisure Farm in Chiayi County, and Shangrila Lesiure Farm and Toucheng Leisure Farm in Yilan County.



- Taiwan Leisure Farms Development Association
- 🌐 [www.taiwanfarm.org.tw](http://www.taiwanfarm.org.tw)

## Special Feature of Taiwan

# A Multicultural Island of Gastronomy



In recent years, Taiwan has received an increasing number of immigrants from Southeast Asia and also welcomes around 180,000 Muslim tourists a year, facts that have led the government to actively promote halal food and halal restaurant certification. To date, 100 restaurants across Taiwan are halal-certified, allowing Muslim visitors to enjoy good food that accords to their religious beliefs.

### Turkish Cuisine

There aren't many Turkish restaurants in Taiwan but the ones that have opened are very popular with young diners, with the specially-flavored meat dishes the best-loved.

### Indian Cuisine

The rich aroma of spices makes Indian dishes so mouthwatering. At present, more than ten Indian restaurants in Taiwan have received halal-certification.

### Thai Cuisine

Thai food has been part of the food scene in Taiwan for many years. There are a large number of Thai restaurants and many have mixed in local culinary influences to develop innovative dishes, such as Full Moon Shrimp Patties which is a "Thai" dish actually invented in Taiwan.

### Beef Noodles

This is one of the famous dishes of Taiwan. It is usually served either red-braised or clear-stewed. Taipei has two long-established halal-certified beef noodle restaurants where Muslim diners can often be seen.

For information about these and other halal restaurants, visit ▼



## Special Feature of Taiwan

# Taiwan Foods and Drinks Suitable for Muslims

Apart from the dishes served at halal-certified restaurants where Muslim visitors can enjoy good food without worry, Taiwan also has a variety of foods and drinks that are well worth trying and are suitable for Muslims.

## Mango Ice

Taiwan is renowned as "a fruit kingdom" and the most famous fruit of all those it produces is mango. Dessert mango ice is extremely popular. CNN and TRAVEL+LEISURE travel magazine even ranked Taiwan's mango ice as one of the best desserts in the world.



## "Hand-shaken" Drinks

Throughout the year, it is common to see people on the streets of Taiwan with drinks in their hand. Taiwan has numerous kinds of "hand-shaken" drinks, and many drink outlets have developed their own distinctive selling points. Perhaps the most famous drink — bubble milk tea or pearl milk tea is now popular around the world but actually originated in Taiwan.

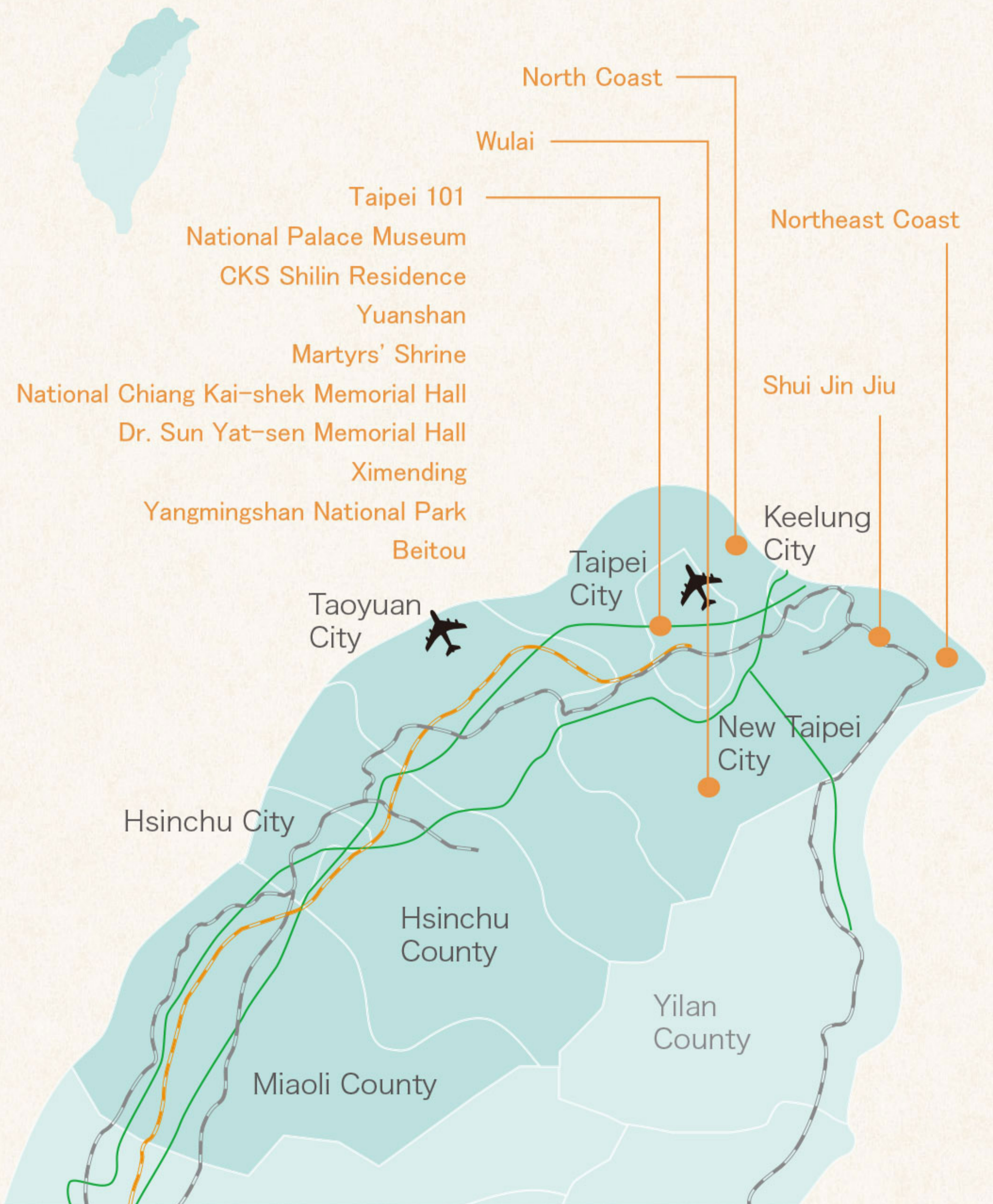


## Vegetarian Cuisine

Taiwan has more than 4,000 vegetarian restaurants, making it a heaven for people who don't eat meat. The ingenious Taiwanese have also taken vegetarian cuisine to a higher level, creating dishes that are close to meat dishes in appearance and taste, and also developing Japanese, Italian, French, and American style vegetarian dishes that are both healthy and tasty.



## Recommended Places in Northern Taiwan



Northern Taiwan includes Taipei City, New Taipei City, Keelung City, Taoyuan City, Hsinchu City and Hsinchu County, and Miaoli County. As Taiwan's main international airport, Taiwan Taoyuan International Airport, is located in Taoyuan City and the most prosperous and bustling city in Taiwan, Taipei, is also located in northern Taiwan, most foreign visitors visit this part of the island first. Northern Taiwan has a highly-developed and convenient transport network and many well-known tourist attractions can be reached conveniently by public transport.



Taipei City

## Taipei 101 (台北 101)

-  No. 7, Sec. 5, Xinyi Rd., Xinyi District, Taipei City
-  Take the MRT Tamsui-Xinyi Line to Taipei 101/World Trade Center Station.

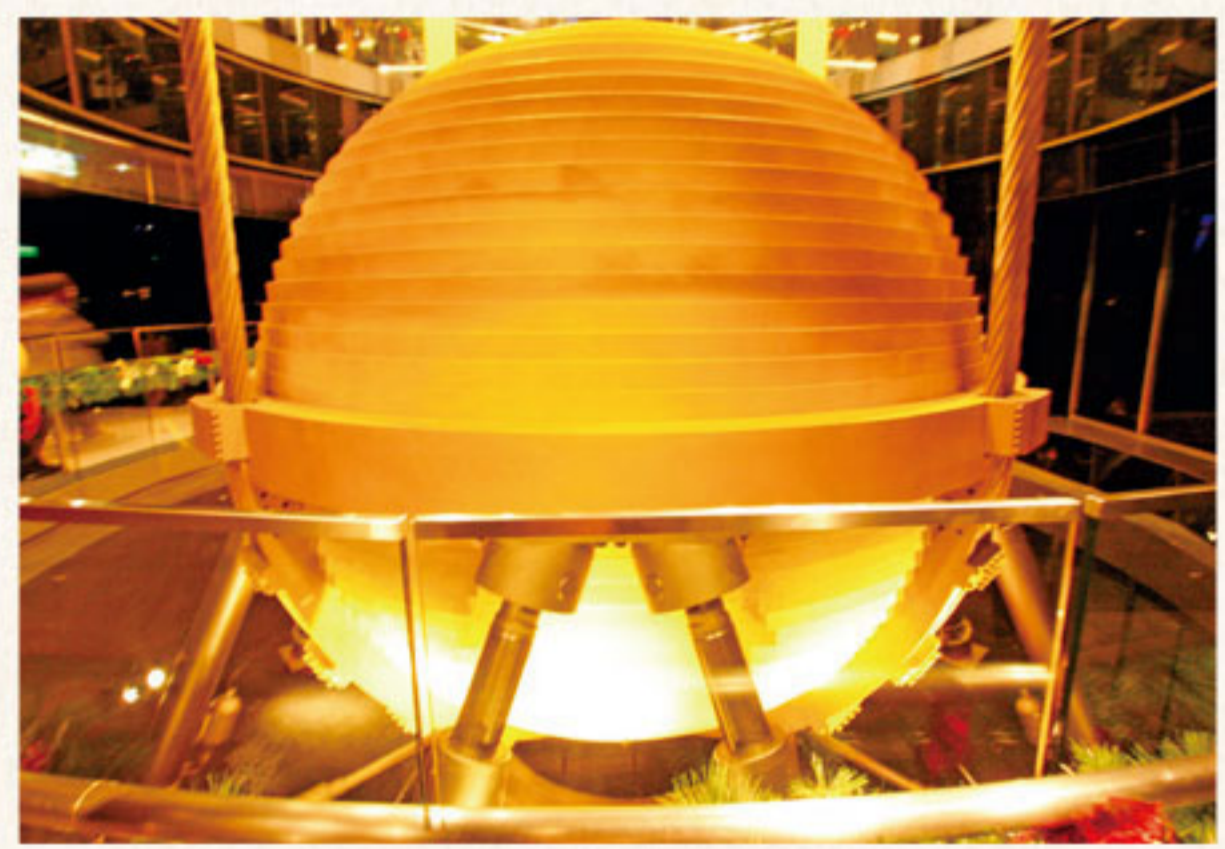


Taipei 101 is located in the most prosperous shopping district of Taipei, Xinyi. It stands 508 meters high and has 101 floors above ground and five below. When completed, it was the tallest skyscraper in the world (currently 9th). It is Taiwan's best-known landmark. The Taipei New Year's Eve Countdown Party at the tower every year attracts huge crowds. The lower floors of the building house a shopping mall, while some higher floors have scenic restaurants as well as the observatory. The rest of the floors serve as office space.

Taipei 101 Shopping Mall has six stories, from B1 to the 5th floor. On B1 you will find a supermarket and a food court. On floors 1-5 are shops selling cosmetics, fashionable clothes, international luxury goods, electronics, and premium Taiwan-made handicrafts.

Taipei 101's observatory is located on the 89th and 91st floors. Take the escalator from the 4th floor atrium to reach the ticket office. You are then transported up to near the top of the tower on the second fastest elevator in the world. The 89th floor observatory deck is indoors, the one on the 91<sup>st</sup> floor is outdoors.

Coming down from the 89th floor to the 88th, another unique construction feature can be seen, a 5.5 meter diameter, 660-ton passive wind damper, the second largest in the world. This is a shock absorber that reduces the tower's sway in strong winds and during earthquakes. It is the only such damper open to visitors in the world.



..... Taipei City .....

## National Palace Museum ( 國立故宮博物院 )

- 📍 No. 221, Sec. 2, Zhishan Rd., Shilin Dist., Taipei City
- 🚌 Take the MRT Tamsui-Xinyi Line to Shilin Station and transfer to bus No. 30.



With a traditional Chinese palace architectural style, this museum is the most famous depository of ancient Chinese artworks in the world. Many of the 600,000 pieces in the collection were collected by Chinese emperors over many centuries, the treasures covering almost 5,000 years of Chinese history. Of the numerous precious pieces, the most popular with visitors are the Jadeite Cabbage and Meat-shaped Stone.

The main exhibition spaces are on the first, second, and third floors of the main building. Visitors can borrow multi-language audio guides and English guided tours are conducted at 10 am and 3 pm daily. The tours are free of charge but you need to register at the service counter.

Souvenir shops are on level B1. Here you can find copies of ancient artworks and peripheral merchandise, with Jadeite Cabbage and Meat-shaped Stone-themed souvenirs the best-selling. Paper tape with added cultural-relic elements and other creative stationery items are also popular with younger visitors

The museum also has two parks worth visiting, namely Zhide Park on its western side and Zhishan Park on its eastern side. Zhishan Park occupies around 19,000 square meters and was designed along the lines of a traditional Chinese garden, displaying the exquisite elegance of Eastern garden art.



..... Taipei City .....

## Yuanshan

(圓山)

- 📍 Take the MRT Tamsui-Xinyi Line to Yuanshan Station.



Located on the southern bank of Keelung River is a large park area, home to Taipei Expo Park and Taipei Fine Arts Museum. It is a popular spot for leisure strolls. Inside Taipei Expo Park is the lifestyle market MAJI SQUARE where music, food, and art are combined; you will find a creative market, a snack street, and a performance stage there. Every Saturday and Sunday, this is also the venue for a farmers' market.

The main landmark of Yuanshan is the Grand Hotel. The hotel was established in 1952 and took on its present appearance as a 14-story Chinese palace-style building later on. Numerous foreign leaders and famous people from around the world have stayed at the hotel, including the President of the US, the Prime Minister of Singapore, the Shah of Iran, the King of Jordan, the King of Thailand, the President of South Korea, the President of South Vietnam, the King of Saudi Arabia, and the President of the Philippines.

## Martyrs' Shrine

(忠烈祠)

- 📍 No. 139, Bei'an Rd., Zhongshan Dist., Taipei City
- 📍 Take the MRT Tamsui-Xinyi Line to Jiantan Station and transfer to bus No. 267 or 646.



The Martyrs' Shrine is located next to the Grand Hotel. The magnificent building, completed in 1969, enshrines the name tablets of servicemen who died for the Republic of China. The guards at the entrance undergo strict training and stand so erect and still they resemble statues, much to the amazement of onlookers. Many people come to view the precisely-coordinated movements of the guards in the hourly changing of the guard.

..... Taipei City .....

## National Chiang Kai-shek Memorial Hall (中正紀念堂)

- 📍 No. 21, Zhongshan S. Rd., Zhongzheng Dist., Taipei City
- 🚌 Take the MRT to CKS Memorial Hall Station.



Located in the heart of Taipei City, CKS Memorial Hall was built to commemorate late President Chiang Kai-shek. The roof of the 70-meter high main building is covered in blue glazed tiles, while the walls are made of white marble. Inside there is a large exhibition space and art gallery.

The National Theater, National Concert Hall, and a Chinese garden are also part of the vast memorial hall grounds. The large open space and magnificent buildings attract thousands of visitors each day. The memorial isn't just a city landmark; it is also one of Taipei's main attractions.

Inside the main memorial building is a 10-meter tall seated bronze statue of Chiang Kai-shek. On the hour from 9am to 5pm, the changing of the guard ceremony is held. The precision of the rifle drill and perfectly coordinated movements of the guards never fail to impress onlookers.

## Dr. Sun Yat-sen Memorial Hall (國父紀念館)

- 📍 No. 505, Sec. 4, Ren'ai Rd., Xinyi Dist., Taipei City
- 🚌 Take the MRT Bannan Line to Sun Yat-sen Memorial Hall Station.



Completed in 1972, this memorial hall was built to commemorate the father of the Republic of China, Dr. Sun Yat-sen. The building has the architectural style of a Chinese Tang dynasty palace. A 5.8 meter high bronze statue stands in the lobby. The changing of the guards ceremony takes place in front of the statue every hour and always attracts a large number of visitors. The Hall is surrounded by the 110,000 square meter Zhongshan Park, a popular place for citizens to engage in various leisure activities.

Taipei City  
Ximending  
(西門町)

📍 Take the MRT to Ximen Station.



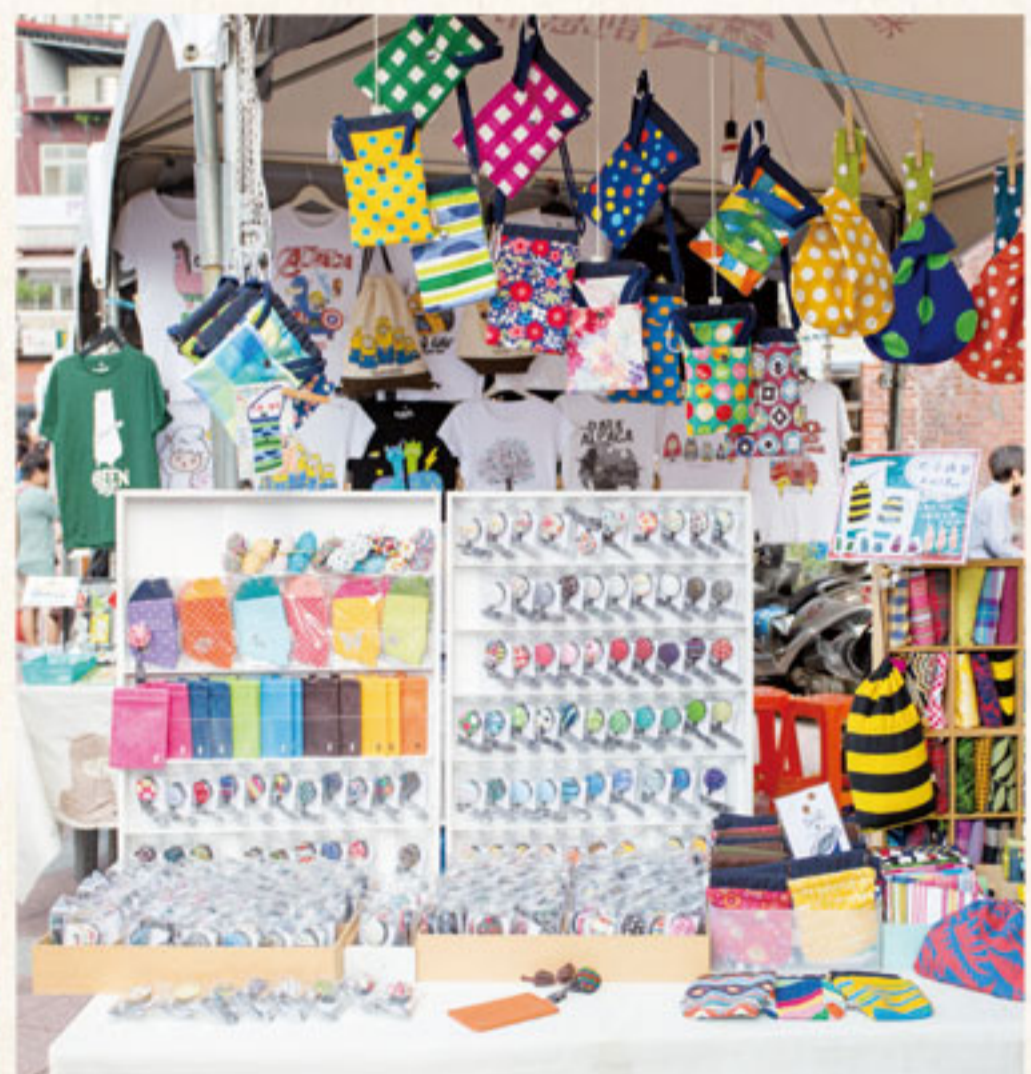
Ximending is the area bordered by Zhonghua Road in the east, Kangding Road in the west, Chengdu Street in the south, and Hankou Street in the north. It has been a leisure-oriented shopping area since the 1890s and to this day is still the most bustling and prosperous area of western Taipei. Ximending is characterized by young people's clothing fashion, food, entertainment, art and sub-culture elements, as well as the latest entertainment and fashion talking points.

As Ximending has a lively atmosphere and attracts many young people, the presentation events for films, singers, electronics products, and fashion are often held here. It is not only a popular place for young locals to shop and see and be seen, it has also drawn in more and more young foreign visitors in recent years.



Red House (紅樓)

📍 No. 10, Chengdu Rd., Wanhua Dist., Taipei City



Located close to MRT Ximen Station, the Red House is a two-story red-brick building completed in 1908; it was originally a public market. The octagonal Red House and the Cruciform Building at the rear are very distinctive in terms of building shape. The Red House is the oldest surviving market building in Taiwan. It is now a space for arts exhibitions and performances, while the Cruciform Building houses the Creative Boutique, featuring many design brands. A creative market, where many young creators sell their works, is held in the plaza outside The Red House every weekend.

..... Taipei City .....

## Yangmingshan National Park (陽明山國家公園)

- ➡ Take the MRT Tamsui-Xinyi Line to Jiantan Station and take a bus to Yangmingshan from there. At Yangmingshan, take bus No. 108 to spots of interest in the area.



Photo/ Taipei City Government

Yangmingshan refers to the area that includes Mt. Datun, Mt. Qixing, and Mt. Shamao. Flowers can be viewed all year round in the park. Cherry blossoms bloom in January, followed by rhododendrons, calla lilies, hydrangeas, and then silvergrass, giving Yangmingshan a different look through the four seasons. The main place for viewing flowers is Yangming Park, where cherry blossoms, plum blossoms, rhododendrons, camellia flowers, peach blossoms, and apricot blossoms can be seen all round. Yangmingshan Flower Season, held in spring annually, is the best-known flower festival in Taiwan.

Yangmingshan has many attractions that are worth visiting, such as Xiaoyoukeng on the northwestern side of Mt. Qixing. With its distinctive volcanic fumaroles, hot spring, and sulfur rocks, it is an excellent geology classroom. Qingtiangang, close to Mt. Qixing, is a large area of grassland where water buffaloes can be seen grazing; this is a suitable hiking destination for the whole family. ◇

## CKS Shilin Residence (士林官邸)

- 📍 No. 60, Fulin Rd., Shilin Dist., Taipei City
- ➡ Take the MRT Tamsui-Xinyi Line to Shilin Station.



Originally the Shilin Horticultural Experimental Station during the Japanese colonial era, the site later became one of the official residences of late President Chiang Kai-shek. It was opened to the public as a park, the CKS Shilin Residence Park, in 1996, and includes the main residence building, the Horticulture Exhibition Hall, as well as Chinese and Western gardens. The rose garden has hundreds of rose bushes with dozens of varieties. The roses bloom from March through May each year and attract a large number of visitors. Chrysanthemum, orchid, and other flower exhibitions are also held every year, attracting large crowds. President Chiang and his wife Soong Meiling lived in the main residence building. The house is now open to the public.

Taipei City

## Beitou (北投)

- Take the MRT Tamsui-Xinyi Line to Beitou Station. Then transfer to Xinbeitou Line and get off at Xinbeitou Station.



Beitou is the hot-spring area that is closest to downtown Taipei. Soon after leaving MRT Xinbeitou Station you will smell a hint of sulfur in the air. Beitou is located where the Datun Mountain Range and the Taipei Basin meet. The volcanoes here are dormant but still offer substantial hot-spring resources.

Hot-spring bathing is a popular pastime in Beitou attracting people with its healthy properties, skin-care benefits, and relaxing qualities. Head uphill from the MRT station area and you will come to various hot-spring bathhouses and hotels, including elegant high-class hot-spring resort hotels and more affordable public bathhouses.

Located between Guangming Road and Zhongshan Road, Beitou Park is a popular scenic spot. The Beitou Hot Spring Museum — inside the park — was a public bathhouse during the Japanese colonial era. Completed in 1913, it was reputed to be the largest hot-spring bathhouse in East Asia. Beitou Library, renowned as Taiwan's most attractive library, is also in the park. This ark-like wooden green building merges perfectly with the surrounding greenery. Finally, visit the source of Beitou's hot springs, Thermal Valley (also known as Hell Valley). The sulfur vapor that constantly rises from the water with temperatures of 90C-100C creates a unique scene.

- Beitou Hot Spring Museum (北投溫泉博物館)
- No. 2, Zhongshan Rd., Beitou Dist., Taipei City



## Wulai (烏來)

📍 Take the MRT Songshan-Xindian Line to Xindian Station and transfer to bus No. 849.



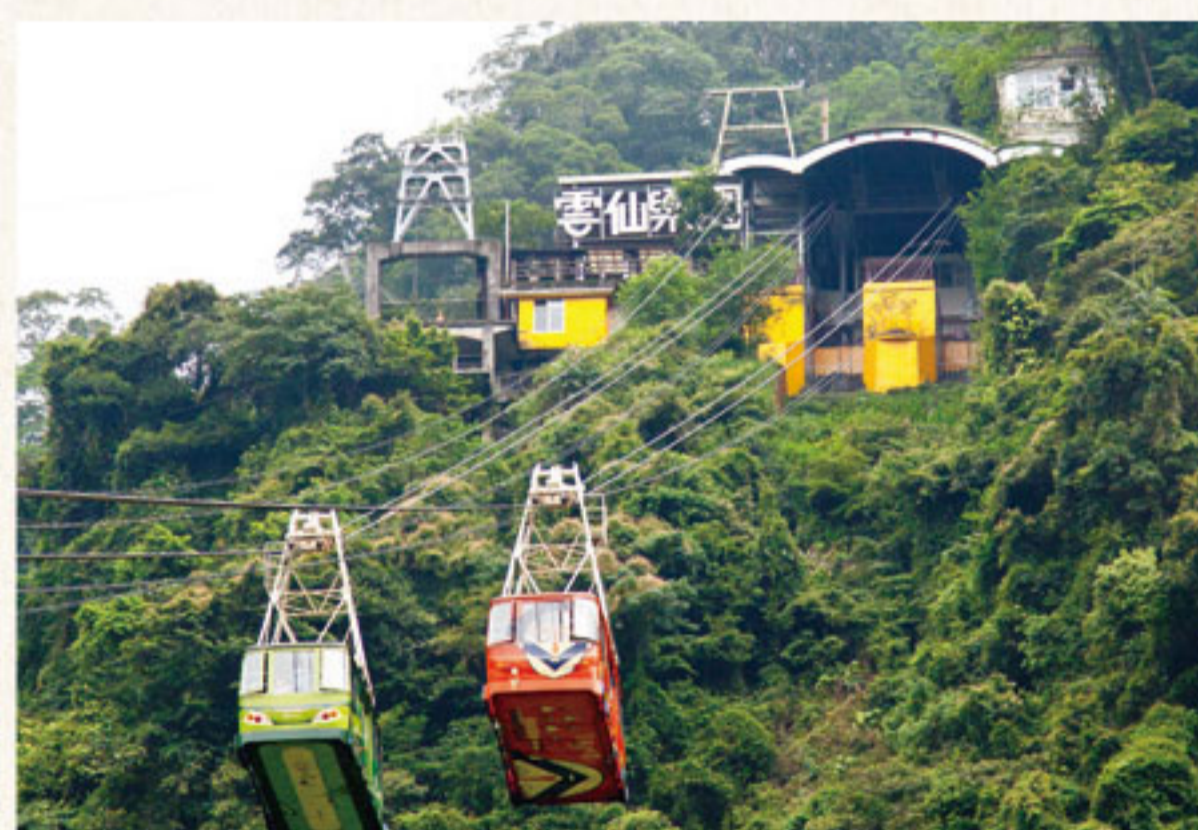
This is a famous hot-spring area in northern Taiwan, renowned for its indigenous charm. It has a miniature train, a waterfall, and a cable car as major tourist attractions. The scenery of Wulai is especially beautiful in spring when the combination of a waterfall and blooming cherry trees creates a lovely scene.

After arriving at Wulai, take a walk along the old street, visit the Wulai Atayal Museum and take in a song-and-dance performance at the Chief's Cultural Village, where traditional Atayal weaving can also be experienced. The well-known tourist miniature train is one of the distinctive attractions of Wulai. Originally used to transport lumber, it now carries tourists and is very popular.

Wulai Waterfall is one of the most beautiful local scenic spots. Around 80 meters high and 10 meters wide, in times of plentiful rainfall it splits into two waterfalls. The vapor from the cascading water fills the river gorge and creates a stunning scene.

The waterfall can be viewed from a scenic platform on the other side of the river. Another option is taking the cable car to Yun-hsien Resort above the waterfall. There is a height difference of 165 meters between start and end point. From the cable car, splendid views of the mountains and a bird's eye view of the river gorge can be enjoyed.

- Wulai Atayal Museum  
(泰雅民族博物館)
- 📍 No. 12, Wulai St., Wulai Dist., New Taipei City





..... New Taipei City .....

## North Coast ( 北海岸 )

- Take the MRT Tamsui-Xinyi Line to Tamsui and transfer to a Taiwan Tourist Shuttle bus (No. 862) following the Crown Northern Coast Route.



The North Coast refers to the coastline between Tamsui and Keelung. Due to weathering and marine erosion over time, varied landscapes created by marine erosion have been formed along the coast. Laomei Green Reef, Shimen Stone Arch, Yeliu Geopark, and Heping Island are all well-known geological attractions along the coastal highway. Quite a few coffee shops and scenic restaurants can also be found along the route.

Without doubt, Yeliu Geopark is the most famous geological attraction on the North Coast. Yeliu is a cape that extends from Yangmingshan's Mt. Datun into the sea. Under the effects of wave erosion, rock weathering, and crustal movement, marine caves, honeycomb rocks, candle rocks, tofu rocks, mushroom rocks, potholes, and other special geological features have been formed. The most famous of these is the Queen's Head, an unusual rock that adds to the charm of the North Coast and attracts a steady stream of visitors.

Apart from the natural scenic wonders along the coast, Juming Museum, an art park further inland that combines human and natural landscapes, is also worth a visit. The museum covers an area of 11 hectares and is divided into indoor and outdoor exhibition areas. The collection includes many works by Taiwan's master sculptor Ju Ming with the outdoor area featuring large pieces, including works from the internationally-renowned Taichi series.



- Yeliu Geopark ( 野柳地質公園 )
- Juming Museum ( 朱銘美術館 )
- 📍 No. 167-1, Gangdong Rd., Yeliu Borough, Wanli Dist., New Taipei City
- 📍 No. 2, Xishihu, Jinshan Dist., New Taipei City

..... New Taipei City .....

## Northeast Coast (東北角)

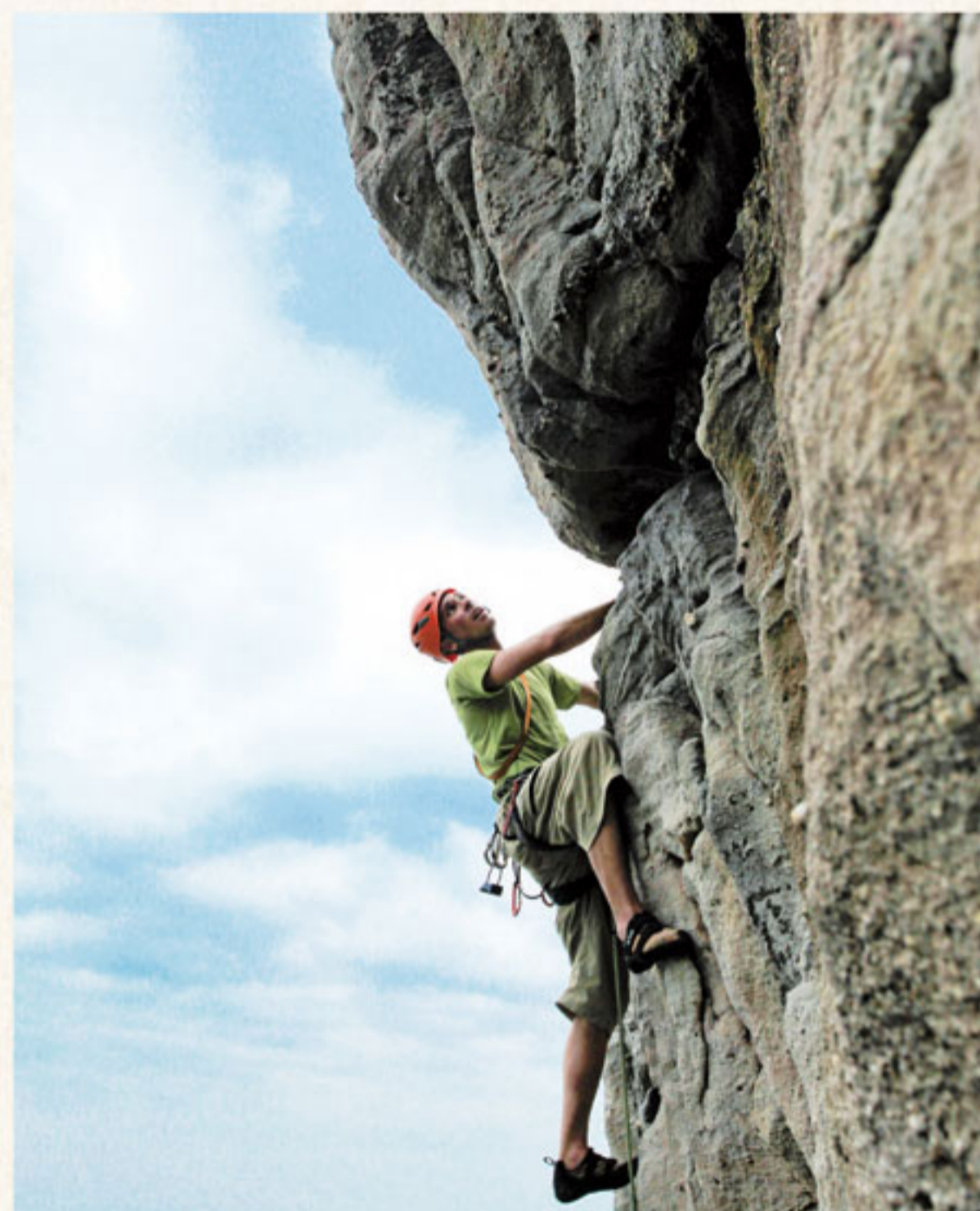
📍 Take a train to Ruifang Station and transfer to a Taiwan Tourist Shuttle bus (No. 856) following the Gold Fulong Shuttle Bus Route.



The Northeast Coast is famed for its geological sights and golden-sand beaches as well as its rich marine ecology. Offering various watersports, it has become a popular leisure destination. The International Sand Sculpture Art Festival in May and Ho-Hai-Yan Rock Festival in July, both held at Fulong each year, attract a large number of visitors.

The coast, rugged and ever-changing, is a veritable geology classroom. One of the best spots to examine gorgeous weathered terrain is the coast at Nanya. Through weathering, beautiful patterns have formed on the sandstone cliffs here. The diverse terrain on the Northeast Coast also offers ideal conditions for rock climbing, especially at the Longdong climbing site reached by following Longdong Bay Cape Trail. Here, you can not only enjoy the thrill of climbing but also appreciate a magnificent mountain-meets-sea scenery.

The most popular spots on the Northeast Coast for water-based activities are Fulong Beach and Longdong Bay Park. At the beach you can enjoy the thrills of surfing, sailing, kayaking, and bodyboarding. Longdong is known for its rocky terrain and clear water. Quite a few fish and other marine creatures can be seen underwater. It is therefore an excellent place to learn about snorkeling and scuba diving.



..... New Taipei City .....

## Shui Jin Jiu (水金九)

- From MRT Zhongxiao Fuxing Station in Taipei take bus No. 1062 to Jiufen and Jinguashi or take a train to Ruifang Station and transfer to a Taiwan Tourist Shuttle bus (No. 856) following the Gold Fulong Shuttle Bus Route.



Shui Jin Jiu refers to three scenic hill settlements on the Northeast Coast, namely Shuinandong, Jinguashi, and Jiufen. Situated close to each other, the three places once collectively produced large amounts of gold and copper and were known as “the No. 1 Precious Metal Mine in Asia.” Prosperous in their heyday, life in the villages faded when mine outputs declined. However, with their old-time streets exuding nostalgic charm, they have found new life in the past 20 years as a popular tourist destinations. They have become one of the must-see attractions of northern Taiwan.

### Jiufen (九份)



Jiufen is one of Taiwan’s must-see places for overseas visitors. The buildings of the settlement were constructed on a hillside. Jiufen Old Street, twisting and turning its way up the hill, is the town’s best-known street. Its long and narrow stone steps with red lanterns hanging on either side form a nostalgic scene that is synonymous with Jiufen. Jiufen's many old-time teahouses are good places to enjoy Taiwan’s excellent tea.

### Jinguashi (金瓜石)



- Gold Museum (黃金博物館)

Jinguashi was once a major gold production center. Today, visitors can learn all about local history in detail at the settlement’s Gold Museum. In the museum's outdoor exhibition area, a section of an old mine tunnel and historic wooden buildings have been preserved.

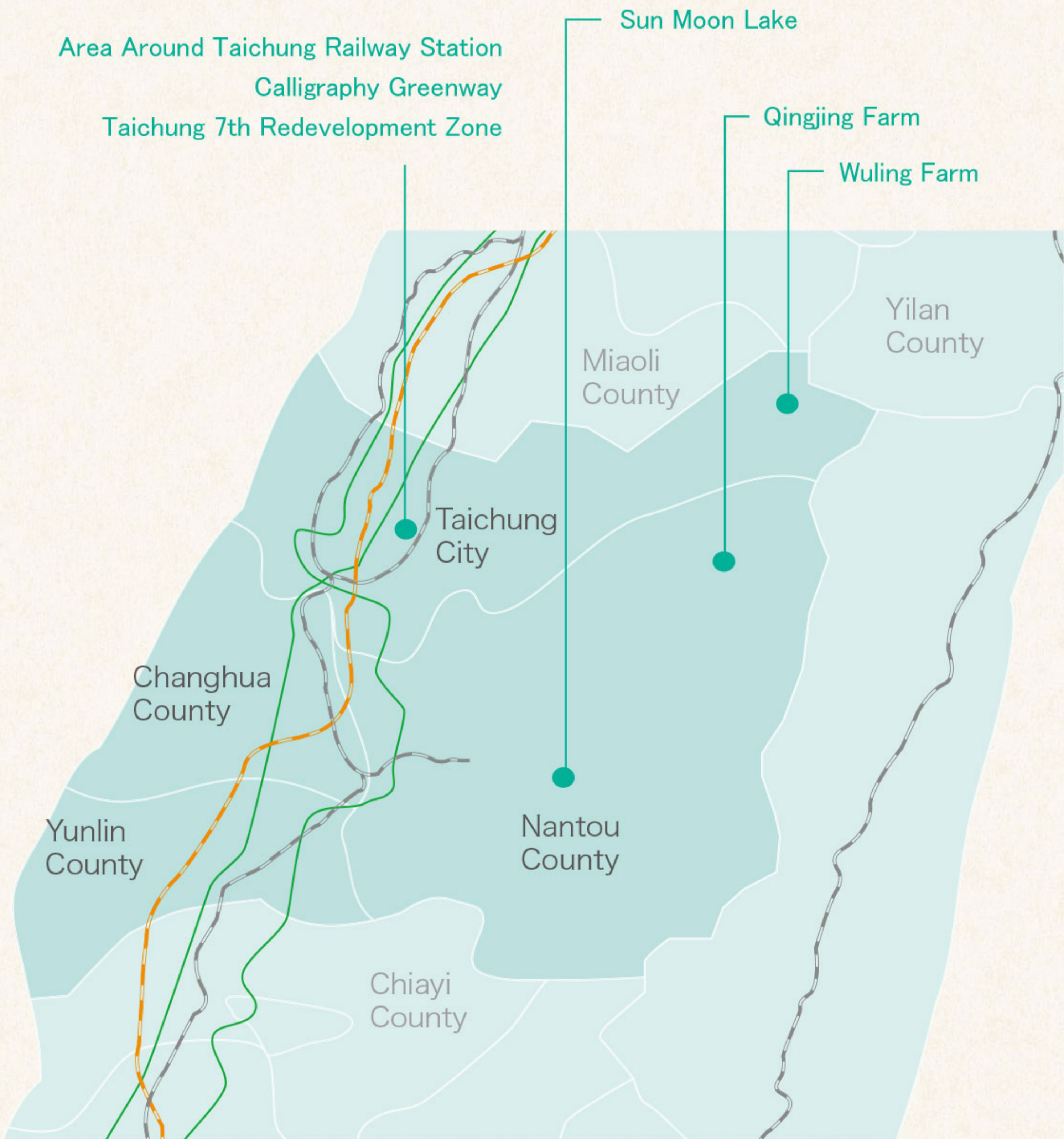
- 📍 No. 8, Jinguang Rd., Jinguashi, Ruifang Dist., New Taipei City

### Shuinandong (水湳洞)



The main landmark of Shuinandong is the ruined and desolate 13-Levels Smelter that bears witness to the rise and fall of the mining industry in the area. The nearby Gold Waterfall is so named because of the gold color of its rocks over which the stream water flows like white silk, creating a beautiful sight.

## Recommended Places in Central Taiwan



Central Taiwan includes Taichung City, Changhua County, Nantou County and Yunlin County. The main areas for tourism here are Taichung City and Nantou County. The biggest city in central Taiwan, Taichung, is bustling and prosperous, while Nantou County has beautiful mountain-and-lake scenery.



..... Nantou County .....

## Sun Moon Lake (日月潭)

➤ From Taichung Railway Station or Taichung High Speed Rail Station take a Taiwan Tourist Shuttle bus following the Sun Moon Lake Route.



Sun Moon Lake is the largest body of water in Taiwan. It offers lovely scenery and a range of attractions within easy reach. There are a large number of resort hotels and homestays around the lake. A stay of at least one night is recommended to view the different vistas of the lake at dusk and dawn.

Visitors can get close to the lake on scenic lakeside trails or take a boat trip. The best option, though, is to cycle along the path that circles the lake, which was ranked by CNN travel website CNNGO as one of the Top 10 most-beautiful bike paths in the world in 2012.

Another way to enjoy the scenery is to take a ride on the cable car, named the Sun Moon Lake Ropeway. It is 1,877 meters long and rises over 200 meters after leaving from a station close to the lake. It then descends to the Formosan Aboriginal Culture Village, a theme park that displays indigenous culture and has a variety of fun rides. The park is also a great location to view cherry blossoms in spring.

Xiangshan Visitor Center is a popular modern attraction at Sun Moon Lake. It was designed by renowned Japanese architect Norihiko Dan. You can view the lake from its sloped roof or at the semi-open space of the center.



## Area Around Taichung Railway Station (台中火車站周邊)

📍 Take a train to Taichung Railway Station.



Taichung Railway Station is the city's downtown transport hub. Not far from the station, Miyahara Eye Hospital and Fourth Credit Cooperative have become popular spots in recent years. They are both highly distinctive in terms of appearance and décor. There you can buy traditional cakes, cheesecakes, and other gift items, as well as ice cream. Nearby Liuchuan Canal now exhibits all-new riverside scenery after work to improve its environment was carried out. After dark, delightful light arrangements attract many visitors.

- Miyahara (宮原眼科)
- 📍 No. 20, Zhongshan Rd., Central Dist., Taichung City

- Fourth Credit Union Taichung (第四信用合作社)
- 📍 No. 72, Zhongshan Rd., Central Dist., Taichung City

## Taichung 7<sup>th</sup> Redevelopment Zone (台中七期重劃區)

📍 From Taichung Railway Station, take bus No. 300.



Due to the fact that the Taichung City Government is located in this zone, this area is also known as the “city government shopping district.” It has a lively department store shopping area featuring Top City, Shinkong Mitsukoshi, and Tiger City, as well as the Taichung National Theater, which has been included in an international list of the world's nine newest landmark buildings.

Designed by prize-winning Japanese architect Ito Toyo, building Taichung National Theater was a real challenge. This architectural feat was completed without the use of beams or columns. Instead, the building relies on a series of 58 curved walls for support. The complex has three theaters, a restaurant, a coffee shop, and a design shop. Also in the area are quite a few green spaces such as Maple Garden and Wen-Hsin Forest Park.

..... Taichung City .....

## Calligraphy Greenway (草悟道)

➤ From Taichung Railway Station, take bus No. 27 to Calligraphy Greenway (草悟道) bus stop.



Calligraphy Greenway is a 3.6-kilometer-long green parkway that crosses central Taichung and has a pronounced artistic atmosphere. This is the place to go for the latest in art and culture in Taichung.

The Greenway can be divided into three parts; the first starts at the National Museum of Natural Science. Walk for a few minutes along the pedestrian zone and you'll reach the second part of the Greenway, where People's Square, Park Lane/Eslite Bookstore, and CMP Block Museum of Arts are situated. In the lanes and alleys off Meicun 1st Road and Zhongxing Street many distinctive stores and restaurants can be found; arts events and a market are held on weekends. The third section stretches from Guoli Taiwan Meishuguan 1<sup>st</sup> Road to Meishu Parkway. Comprising of grassy areas, greenery, and sculptures, this road has many restaurants that exude exotic charm.

Shen Ji New Village, next to the National Taiwan Museum of Fine Arts, is a base for artistic creation for young people, with shops offering ceramics, wood products, handmade shoes, and other items. A visit on weekends when most stores are open is recommended. A market is also held on the third weekend each month.



● Shen Ji New Village (審計新村)  
 ● Ln. 368, Minsheng Rd., West District, Taichung City

..... Taichung City .....

## Wuling Farm ( 武陵農場 )

- 📍 Wuling Road, Pingdeng Village, Heping District, Taichung City
- 🚌 From Yilan Railway Station, take a bus to Wuling Farm.



Wuling Farm is situated on the Yilan branch of the Central CrossIsland Highway; it covers an area of 238 hectares and is known for its stunning natural beauty. Ranging in elevation from 1,740 to 2,200 meters, it is one of Taiwan's big three high-mountain farms alongside Qingjing Farm and Fushoushan Farm.

The farm lies within Shei-Pa National Park. It is surrounded by mountains, rivers run through it, and it is blessed with rich flora and fauna. There are high mountains, river gorges, terraces, and waterfalls. In spring, the hillsides become a sea of peach and plum blossoms; summer is the season for high-mountain fruit; and in autumn, due to the farm's relatively high altitude, its maple trees turn red quite early. Wuling Farm is one of the best places to view maple trees in Taiwan. It is also renowned as a place to see snow in winter, during which the snow-shrouded mountain peaks surrounding the farm have a distinctive charm.

At Wuling Farm you can visit the Taiwan Salmon Eco Center, dedicated to the protection of the Formosan Landlocked Salmon. There are displays with information about this rare salmon, which is reared here as part of a recovery program. Wuling Farm is an ideal place to enjoy the charms of Taiwan's high mountains and go on eco tours.





..... Nantou County .....

## Qingjing Farm (清境農場)

- 📍 No. 170, Renhe Rd., Datong Village, Ren'ai Township, Nantou County
- 🚌 Take a bus from Taipei or Taichung to Puli, then transfer to a bus to Qingjing Farm.

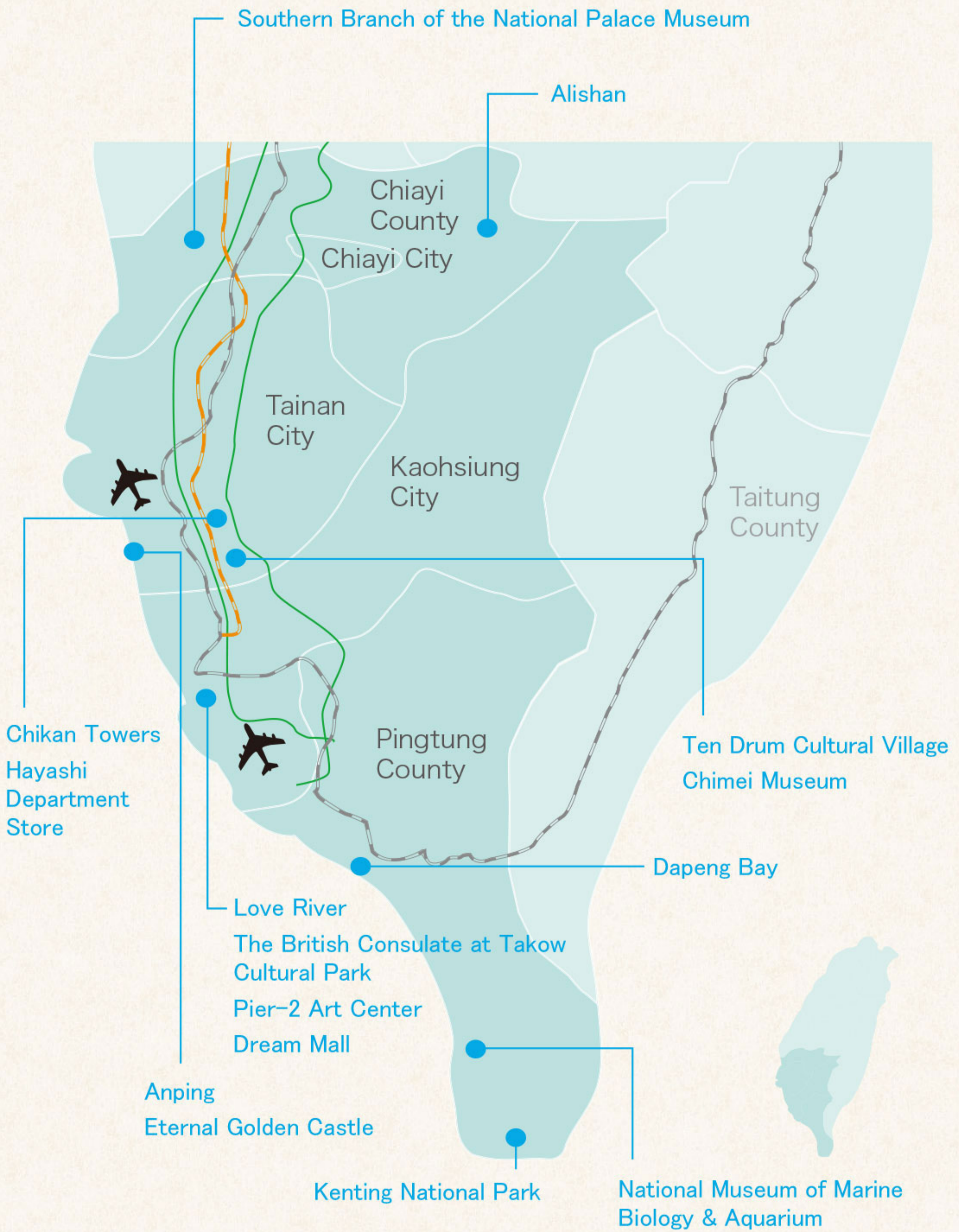


Qingjing is located in Ren'ai Township, Nantou County, sitting at an elevation of 1,750 meters above sea level. Its main attractions are Qingjing Farm, Huixun Forest Area, and National Taiwan University Meifeng Farm. At Qingjing Farm you can visit a sheep farm area, a pasture area, a fruit and vegetable area, a high-mountain flower area, and a high-mountain vegetable area. At Qingjing different kinds of beautiful scenery can be enjoyed throughout the year.

When visiting the farm you can see a large number of cute sheep scattered across the hillside and every weekend, there is a sheep-shearing show to enjoy. You can also stroll through Swiss Garden and feel like you are in Europe. The garden has flowers and grasses from all over the world. Flowers bloom at different times of the year, creating different beautiful scenes according to the season.



## Recommended Places in Southern Taiwan



Southern Taiwan includes Chiayi County, Tainan City, Kaohsiung City, and Pingtung County. Historically, it was the first region in Taiwan to see modern development. Today there is a highly-developed agricultural industry with an output of an abundance of produce. Located in the tropical zone, southern Taiwan's four seasons are relatively warm. Here you can find large areas of pristine forest and seemingly-endless country scenes. Kaohsiung, a major port city, is the largest urban center in the south.

..... Chiayi County .....

## Southern Branch of the National Palace Museum ( 故宮南院 )

- 📍 No. 888, Gugong Blvd., Taibao City, Chiayi County
- 📍 Take the Taiwan High Speed Rail to Chiayi Station and transfer to a shuttle bus to the museum.

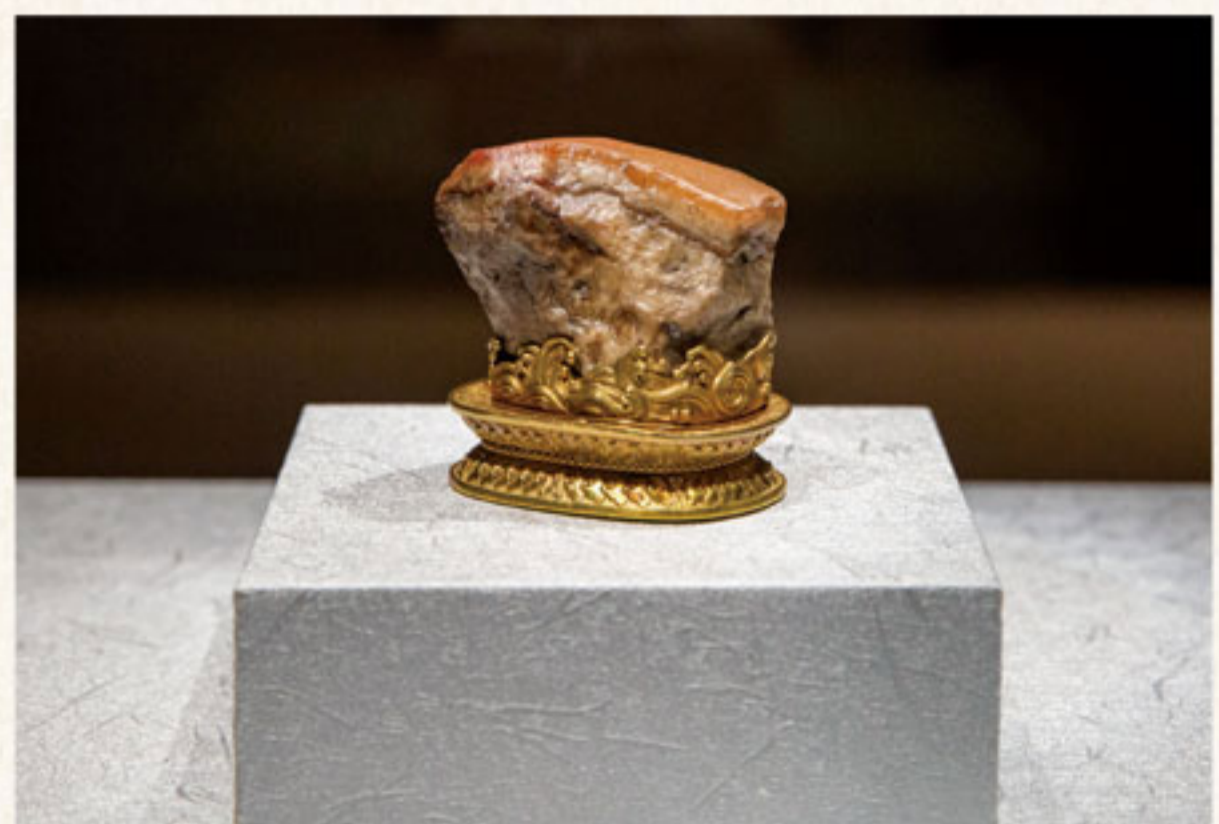


The Southern Branch of the National Palace Museum (NPM) is positioned as an "Asian art and culture museum" in contrast to Taipei's NPM which focuses on Chinese artwork. The Southern Branch exhibits artworks and cultural relics from Taiwan and various Asian countries. The building design has a strong modern feel, which also contrasts with the Chinese-palace style of the Taipei museum.

The grounds of the Southern Branch cover 20 hectares and you will see a scenic arched bridge, a lake, and a leisure area that you can stroll through after taking in the magnificent exhibits inside the museum. At sunset, the sun going down over the bridge creates a beautiful scene.

As the mission of the Southern Branch is to promote Asian art and culture, cooperation agreements have been signed with renowned museums overseas arranging for splendid Asian artworks and cultural relics to be exhibited at the museum. The museum's various permanent exhibitions include one featuring the local development history of Chiayi, one featuring tea culture, one featuring Asian textiles, and one featuring new-media art.

After visiting the museum, take a side trip to the nearby Taisugar Suantou Sugar Factory where you can see century-old sugar-making machinery. The factory can be toured aboard a miniature train.



..... Chiayi County .....

## Alishan (阿里山)

📍 Take a Taiwan Tourist Shuttle bus from either Chiayi High Speed Rail Station (Route A) or Chiayi Railway Station (Route B).



Located in the east of Chiayi County, the Alishan Forest Recreation Area is a famed high-mountain tourist destination. Its main distinctive features are its Chinese cypress forest with 1,000-year-old trees, and the sole alpine railway in Taiwan (one of only three in the world). Must-do things for visitors are rising very early to view the magnificent sunrise and viewing the stunning "sea of clouds."

The Alishan Forest Railway is 71.4 kilometers long. It starts at Beimen Railway Station in Chiayi City at an elevation of 30 meters and climbs its way up to Alishan Station at 2,216 meters, stopping at 17 stations in all, with the journey taking around three hours and twenty minutes. Due to typhoon damage, the service only operates between Beimen and Fenqihu at present.

Alishan Forest Recreation Area has around 1,400 hectares of forest. Spring is the time for viewing cherry blossoms, while autumn is the best time to view the "sea of clouds." Alishan House, Alishan Railway Station, and Zhaoping Park are amongst the best places to view the scenery. There are numerous trails in the area. One not to be missed is the Giant Tree Cluster Trail that can be walked after alighting at Sacred Tree Station. Along the trail you can marvel at lofty Chinese cypresses that are almost 1,000 years old.



Tainan City

## Chikan Towers (赤崁樓)

- 📍 No. 212, Sec. 2, Minzu Rd., Zhongxi Dist., Tainan City
- 🚌 From Tainan Railway Station, take a Taiwan Tourist Shuttle bus following the 88 Anping Route.



First built by the Dutch in 1652, Chikan Towers suffered the effects of war and weather. It was rebuilt twice, first in 1886 and again in 1974. The original Dutch-style fort was replaced by traditional Chinese-style buildings that can be seen today. Over 300 years old, this site has long been an important national monument of Tainan. A special feature of the towers is the nine stone tablets with turtle-shaped sculptures at their base standing outside the perimeter wall. The stone tablets record the suppression of a rebellion by the Qing court in 1788 and, as such, have great historical and cultural value. ◆

## Hayashi Department Store (林百貨)

- 📍 No. 63, Sec. 2, Zhongyi Rd., Zhongxi Dist., Tainan City
- 🚌 From Tainan Railway Station, take a Taiwan Tourist Shuttle bus following the 88 Anping Route.



Quite a few historic buildings in Tainan are not just well-preserved, they have been put to new purposes and are in active use. One example is the Hayashi Department Store, which opened in 1932. The oldest surviving department store in Taiwan, the building was left idle for many years, before it was renovated and opened to the public again in 2014. It has a retro-style elevator, old display cabinets, machine gun bullet holes from WWII, and the remains of a rooftop Shinto shrine. Each floor comes with a Tainan or Taiwan cultural theme, and food, design products clothes, accessories etc. are sold. There are also exhibition spaces. At Hayashi you can also enjoy coffee, desserts, and Japanese/Western dishes.

## Tainan City

### Anping (安平)

- From Tainan Railway Station, take a Taiwan Tourist Shuttle bus following the 88 Anping Route.



Located in the far west of Tainan City, one of the city's most famous historic sites is Anping Fort, Taiwan's first fort. The existing structure was built during the Japanese colonial era. In nearby Old Tait & Co. Merchant House, wax figures are used to recreate scenes from daily life in Taiwan long ago. Anping Treehouse was originally an abandoned warehouse covered in banyan roots and was well-known for the unusual joining of building and plant as one. There is a walkway that takes you up into the tree. After taking in these historic sites, you can return to Yanping Street next to Anping Fort where there are many stores selling traditional goods.

- Anping Fort (安平古堡)
- 📍 No. 82, Guosheng Rd., Anping Dist., Tainan City

### Eternal Golden Castle (億載金城)

- 📍 No. 3, Guangzhou Rd., Anping Dist., Tainan City
- From Tainan Railway Station, take a Taiwan Tourist Shuttle bus following the 88 Anping Route.





Photo/ Tainan City Government

This was the first Western-style fort on Taiwan proper, and it was also the first to be equipped with Armstrong guns and thus has an important position in the history of forts in Taiwan. Completed in 1876, Eternal Golden Castle is a square Western-style red-brick building, designed by a Frenchman. At the center of the fort there is a drill ground. Sea water was channeled in to fill a moat that successfully kept away attackers on a number of occasions. The big gun you can see today is a replica that the Tainan City Government created in 1976 to celebrate the centenary of Eternal Golden Castle.

..... Tainan City .....



## Ten Drum Cultural Village (十鼓仁糖文創園區)

-  No. 326, Sec. 2, Wenhua Rd., Rende Dist., Tainan City
-  Take a train to Bao'an Railway Station.



This was originally a sugar factory dating back to 1909. After the factory closed, the site was leased by Tainan's Ten Drum troupe. Combining precious sugar industry cultural relics and highly-skilled drum performances, Ten Drum Cultural Village is Asia's first drum-music-themed international arts village. It covers seven hectares and has 16 warehouse buildings dating back to the Japanese colonial era. Three drum performances are presented every day. There is also a drum museum, a drum workshop, a restaurant, and a miniature train that takes visitors around the grounds. After enjoying a splendid drum performance, you can try your hand at drumming in the drum classroom.

## Chimei Museum (奇美博物館)

-  No. 66, Sec. 2, Wenhua Rd., Rende Dist., Tainan City
-  Take a train to Bao'an Railway Station.



Situated in Tainan Metropolitan Park, the museum's building resembles a European palace, combining Roman, Greek, and other architectural styles. The imposing Fountain of Apollo Plaza features a reproduction of the fountain at the Palace of Versailles in France. The museum collection contains over 10,000 pieces, mostly Western artworks including paintings, sculptures, furniture, musical instruments, weapons, and animal specimens. It also has priceless items such as the oldest cello in the world. There also are two cafés and a gift shop.

..... Kaohsiung City .....

## Love River (愛河)

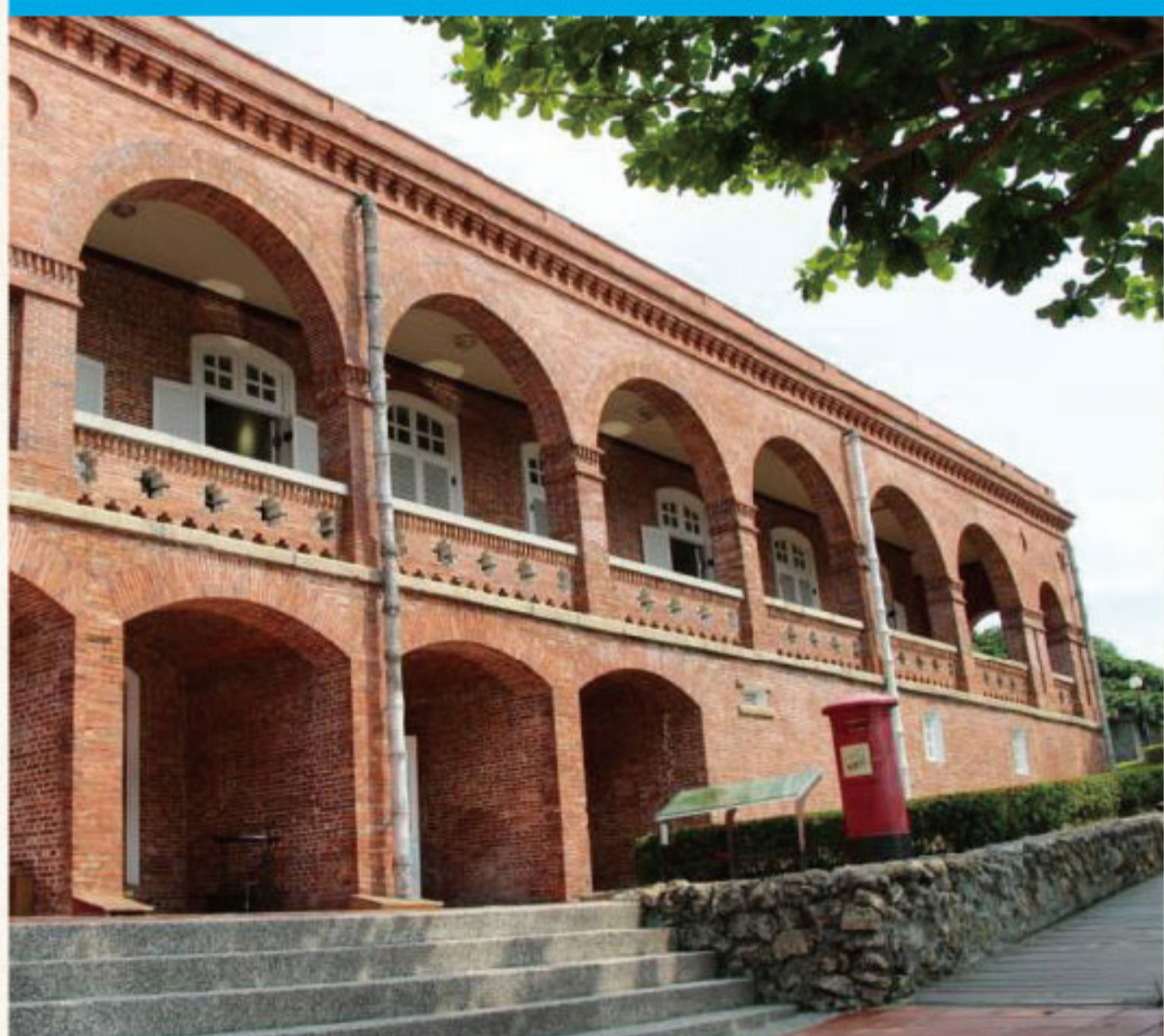


Love River is the main river flowing through downtown Kaohsiung. Along its 12 kilometer length there are bikeways and walking paths. After night falls, the lights along the river banks are lit and, together with the lights from tall buildings, they create a gorgeous romantic scene. Along the river are a number of parks and it is the venue for annual activities during the Lantern Festival and the Dragon Boat Festival.

To take a boat cruise on the Love River, go to the wharf near Kaohsiung MRT City Council Station and board a Love Boat. The boat service has two routes; boats on the first route depart from near Zhongzheng Bridge and sail to True Love Wharf and back, allowing you to take in the riverside buildings from a different angle. The scenery is especially fetching after dark when myriad lights shine. Boats on the second route travel between Love River and Pier-2 Art Center.

## The British Consulate at Takow Cultural Park (打狗英國領事館文化園區)

- 📍 No. 20, Lianhai Rd., Gushan Dist., Kaohsiung City
- 🚌 Take the KMRT to Sihzihwan Station and transfer to bus No. 99 or Orange 1A.



Built in 1879, this old consulate building comprises the Consulate Office at the bottom of a hill and the Consular Residence on top of the hill, the two linked by an old path. The buildings are baroque in style. The British Consulate was opened to the public in 2013 after renovations. It displays various cultural relics connected to Kaohsiung's trading history. As the Consular Residence is perched on a hill, it is a good place to enjoy great bird's eye views of Kaohsiung Harbor.



..... Kaohsiung City .....

## Pier-2 Art Center (駁二藝術特區)

- 📍 No. 1, Dayong Rd., Yancheng Dist., Kaohsiung City
- 🚶 Take the KMRT Orange Line to Yanchengpu Station.



Pier-2 is located within Kaohsiung Harbor at the southern end of Dayong Road in Yancheng District. After the year 2000, the dilapidated harbor warehouses of the pier were converted into a cultural base for the city. The place now provides performance spaces for music and arts events, and various festival events are also held here. As more and more artists and design brands have moved in, Pier-2 has become an important performance and exhibition venue and a creative-shop cluster.

Hamasen Museum of Taiwan Railway was opened in the last few years, displaying railway locomotive and track models in over 300 square meters of space. It has become a popular tourist attraction.

## Dream Mall (統一夢時代)

- 📍 No. 789, Zhonghua 5th Rd., Qianzhen District, Kaohsiung City
- 🚶 Take the LRT Line to Dream Mall Station.



Covering an area of over 37,000 square meters, this is Taiwan's largest integrated shopping mall. It has been named by Forbes Traveler as one of the Top 10 shopping malls in Asia. Its most distinctive feature is the 102.5 meter tall, 50 meter diameter Ferris wheel on the mall's roof, which takes around 15 minute to rotate full circle and offers splendid views of the city.



..... Pingtung County .....

## Dapeng Bay (大鵬灣)

- 📍 From Taiwan High-Speed Rail's Zuoying Station, take a Taiwan Tourist Shuttle bus on the Kenting Express Route and get off at Dapeng Bay.



This is a natural lagoon on the southwestern coast of Taiwan. The bridge that crosses the lagoon mouth is a beautiful and distinctive local landmark. It is the only scenic bridge in Taiwan that can be opened up to let ships pass through. The bridge-opening show takes place at 4:30pm on weekends and on national holidays. Dapeng Bay is rich in flora and fauna, making it an excellent choice for eco-tourism. Visitors can engage in sailing, kayaking, and other water sports here; the annual sailing regatta is an important event. Nearby Donggang Fishing Harbor is well-known for its blue-fin tuna, sakura shrimp, and oil fish roe. Don't forget to enjoy some fresh seafood there. ◇

## National Museum of Marine Biology & Aquarium (國立海洋生物博物館)

- 📍 No. 2, Houwan Rd., Houwan Village, Checheng Township, Pingtung County
- 📍 From Taiwan High-Speed Rail's Zuoying Station, take a Taiwan Tourist Shuttle bus on the Kenting Express Route and get off at Nanbaoli bus stop. From there, take a shuttle bus to the museum.



The National Museum of Marine Biology & Aquarium (NMMBA) is situated in the northwest corner of Kenting National Park. Here you can learn about Taiwan's main rivers and marine environment. There is an 84-meter submarine tunnel, which you can walk through and see living coral and various marine creatures surrounding you. The museum holds "Night in NMMBA" activities that allow you to feel as if you are actually sleeping among the fish in the ocean. Seals and penguins can also be viewed close up. The 10-meter-high huge kelp forest is of the most distinctive exhibition areas.

..... Pingtung County .....

## Kenting National Park ( 墾丁國家公園 )

➤ From Taiwan High-Speed Rail's Zuoying Station, take a Taiwan Tourist Shuttle bus on the Kenting Express Route.



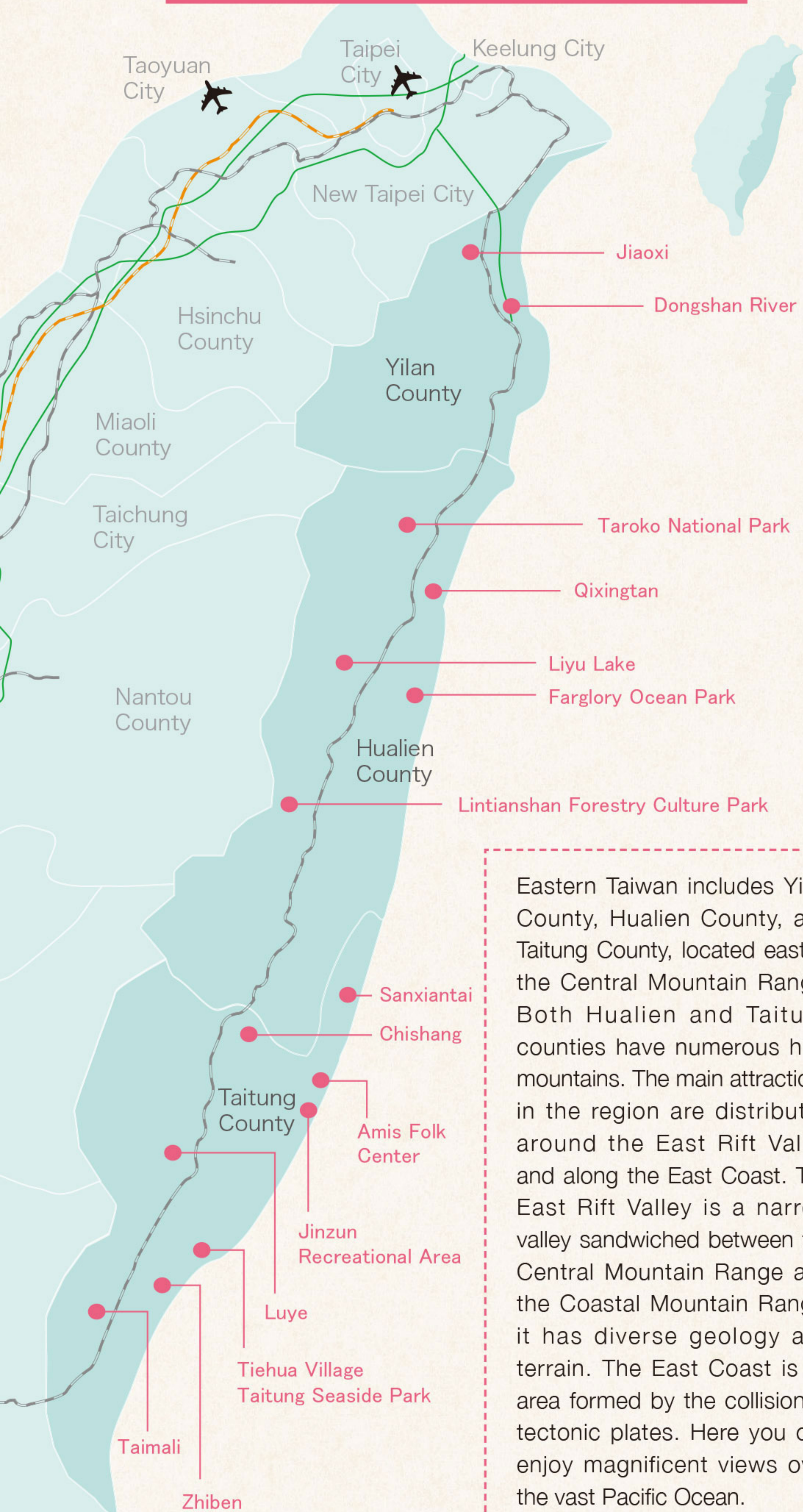
Kenting National Park is located on the Hengchun Peninsula in the far south of Taiwan; it is blessed with precious mountains and marine resources. Offering well-known beaches such as Nanwan, Dawan, and Xiaowan and enjoying a tropical climate, Kenting is Taiwan's favorite vacation destination. Music events are frequently held on the beaches here, attracting large numbers of visitors in spring and summer. Kending Road, also known as "Kending Main Street," between the national park entrance and Caesar Park Hotel Kenting, is the most prosperous and vibrant local street.

In addition to soaking up the tropical charm of Kenting, local ecological attractions such as Mt. Dajian and the coral-reef limestone terrain of Maobitou and Sail Rock are natural treasures that you should not miss. Houbihu Marina, which is suitable for diving and snorkeling, and Baisha Bay, where scenes from the movie *Life of Pi* by acclaimed director Ang Lee were shot, have also become popular spots in recent years.

As well as fascinating natural landscape, Hengchun Peninsula also retains many historic buildings from the late 19<sup>th</sup> century such as Eluanbi Lighthouse in Eluanbi Park. Built in 1833, this is the southernmost lighthouse in Taiwan; to this day it still has the most powerful light of all lighthouses on the island. The park has a coastal trail from which the sea-meets-sky scenery and ever-changing coral reef terrain can be taken in.



## Recommended Places in Eastern Taiwan



..... Yilan County .....

## Dongshan River

(冬山河)

➤ From Luodong Railway Station, take a Taiwan Tourist Shuttle bus following the Dongshan River Route.



Dongshan River is the main river of Yilan County. Dongshan Water Park and the National Center for Traditional Arts are the main attractions on its banks; both are linked by a ferry; and you can enjoy the riverside scenery during a ferry ride.

Dongshan River has a steady flow of water all year round and has become the main base for rowing in Taiwan. As well as the international rowing competition held annually, the park is also the venue for the crowd-pulling International Children's Folklore & Folkgame Festival in July. Various water facilities turn the park into a huge water fun spot. On the riverbanks are bikeways from which the countryside scenes and the beautiful river can be enjoyed. Cycling is the best way to fully appreciate the charms of Yilan.

### National Center for Traditional Arts

(國立傳統藝術中心)

📍 No. 201, Sec. 2, Wubin Rd., Jixin Village, Wujie Township, Yilan County



The Center has traditional Taiwanese culture as its theme and includes traditional buildings, crafts, and folk culture. The buildings show how ordinary people lived in times gone by, taking you back to the Taiwan of centuries ago. This has also become a popular location for historical TV dramas and films. Performances can be enjoyed in the settlement area and at the waterside outdoor stage. In the food street area various tasty traditional Yilan snacks are served. Visitors love to browse through the dozens of craft shops. There are also boats with an old-time feel you can ride to enjoy the riverside scenery.

..... Yilan County .....

## Jiaoxi ( 礁溪 )

➡ Take a train to Jiaoxi Railway Station or take a bus from Taipei Bus Station or Taipei City Hall Bus Station to Jiaoxi.



Jiaoxi Hot Spring is a popular tourist destination that visitors to Yilan should not miss. The spring water contains sodium bicarbonate and the hot spring is one of the rare lowland hot springs in Taiwan. The water is rich in minerals such as calcium, iron and sodium and is famed for its skin care properties.

Close to Jiaoxi Railway Station and the Jiaoxi bus station is Jiaoxi Hot Spring Park where you can enjoy a free hot-spring foot bath. There is also the fully-equipped Forest Baths bathhouse. Landscaped with flowing water, rocks, and trees, the park offers a natural and tranquil environment. Tangweigou Hot Spring Park is a five-minute walk from the railway station.

The outdoor area has a hot-spring stream where you can bathe your feet. The wooden building to the rear is a cheap and clean public bathhouse.

Several dozen hot-spring hotels can be found along Jiaoxi Road and the surrounding streets, ranging from low price to high class. Day tickets can be bought by non-guests to use hotel bathhouses and hot-spring spas. In recent years, more and more high-end hotels have opened here such as Hotel Royal Chiao Hsi, Evergreen Resort Hotel Jiaosi, and Wellspring by Silks. Jiaoxi also has quite a few homestays with distinctive architecture where room facilities and food rival the high-class hotels.



..... Hualien County .....

## Taroko National Park ( 太魯閣國家公園 )

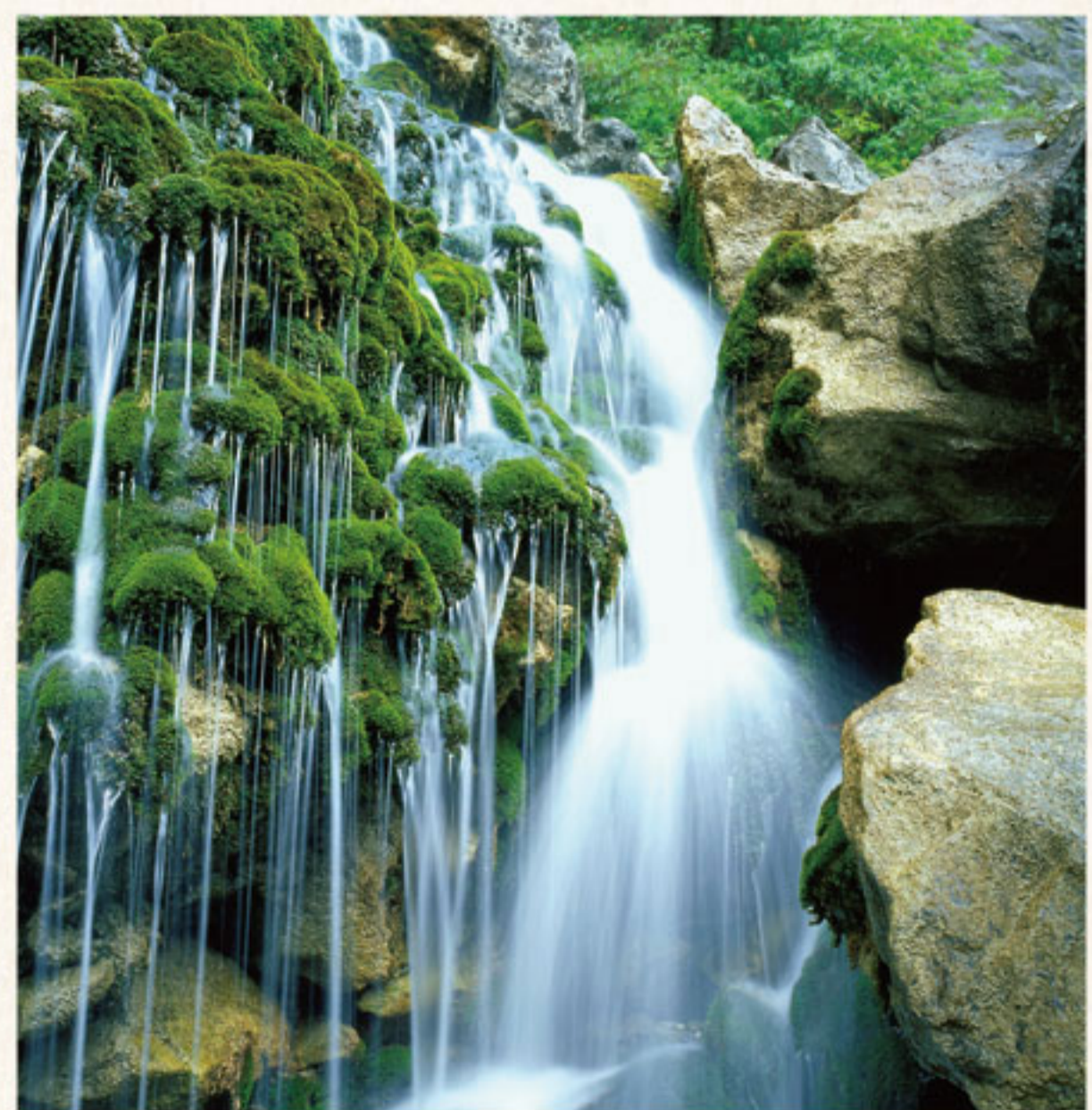
➡ From Hualien Railway Station, take a Taiwan Tourist Shuttle bus (No. 1133) following the Taroko Route.



Taroko National Park is renowned the world over for its magnificent marble gorge, which has almost vertical walls. Featuring rock walls, cliffs, smaller gorges, winding tunnels, exposed rock strata, rivers, waterfalls, and other natural wonders, Taroko is one of the must-see places for international visitors to Taiwan.

Waterfalls offer some of the best sights in the park, the most notable being Baiyang Waterfall, Changchun Waterfall, and Lushui Waterfall. Swallow Grotto and Tunnel of Nine Turns are amongst the most magnificent natural wonders of the gorge as well as its narrowest section; paths have been built for visitors to enjoy the scenery to the fullest. Numerous holes can be seen on the marble rock face opposite Swallow Grotto. In spring and summer, swallows can be seen shooting across the cliff or nesting in the holes.

Taroko Arch is a small Chinese style arch, a popular spot for taking commemorative photographs. Eternal Spring Shrine was built to commemorate the many workers who lost their lives during the construction of the Central Cross-Island Highway. Standing quietly in a lush green valley with water cascading down at the side, it presents an extremely beautiful scene.



..... Hualien County • Taitung County .....

## East Rift Valley (花東縱谷)

### Liyu Lake (鯉魚潭)

➤ From Hualien Railway Station, take a Taiwan Tourist Shuttle bus (No. 303) following the Hualien Route.



Liyu Lake is about 30 minutes from downtown Hualien by car. It is eastern Taiwan's largest lake, covering over 100 hectares. At the southern side of the lake is the Chinan Forest Recreation Area and a camping ground; on the eastern side is Mt. Liyu, a popular paragliding spot. A dedicated bike path, about five kilometers long, circles the lake. You can enjoy the lake scenery riding rented bicycles or go out on the lake in paddle boats. There are quite a few cafés and restaurants on the lakeside and on nearby streets where you can enjoy afternoon tea or a seafood meal.

### Lintianshan Forestry Culture Park (林田山林業文化園區)

➤ From Hualien Railway Station, take a Taiwan Tourist Shuttle bus (No. 303) following the Hualien Route .



Lintianshan was once the fourth largest forestry station in Taiwan and became an important forestry center during the Japanese colonial era. It had a railway line built specially to transport logs and also includes dormitories for the forestry workers, a clinic, stores, hairdressers, a fire station, and even a school. It was the home to 400-500 households in its heyday. After a total ban on logging natural forests was imposed in 1991, Lintianshan retained its Chinese cypress buildings, railway tracks, and other cultural resources. It was later reopened as Lintianshan Forestry Culture Park.



## Chishang (池上)

Take a train to Chishang Railway Station.



Chishang is known as Taiwan's "home of rice" and is famous for its endless countryside scenery. Before harvest time, vast seas of yellow rice ears can be seen swaying in the breeze; after the harvest, the fields are planted with common cosmos and rape. The best way to see Chishang is on a bicycle. Setting off from near the railway station, visit the Dapo Lake and then the fields and take in the pleasant rift valley scenery. "Mr. Brown Avenue," made famous by a TV commercial, has no telegraph poles or structures along it and therefore offers uninterrupted panoramic views across rice fields.



## Luye (鹿野)

From Taitung Railway Station, take a Taiwan Tourist Shuttle bus (No. 8168) following the East Rift Valley Route.



Photo/ Taitung County Government

In recent years, Luye has become a center for hot-air ballooning and paragliding. High up on Luye Plateau, paragliding and grass skiing can be enjoyed, and a two-month long hot air-balloon carnival is also held each summer. You can go up in a balloon that is tethered to the ground or take an un-tethered flight, piloted by a skilled flyer, across the East Rift Valley, enjoying a bird's eye view of the Central Mountain Range, the Coastal Mountain Range, and the valley inbetween. At night, performances combining music and hot-air balloons are held.

## East Coast (東海岸)

### Qixingtán (七星潭)

From Hualien Railway Station, take Hualien bus No. 105 to the last stop.



Qixingtán is a curved bay in Xincheng Township, Hualien County. The coastline here stretches for over 20 kilometers and there is a pebble beach about 100 meters wide. Along the coast are trails, pavilions, and leisure facilities; this is a great spot to take in the views of the Qingshui Cliffs in the distance.

### Farglory Ocean Park (海洋公園)



- 📍 No. 189, Fude, Yanliao Village, Shoufeng Township, Hualien County
- 🚌 From Hualien Railway Station take bus No. 1127, 1140 or 1145 to the Park.

Located in Hualien County's Shoufeng Township, Farglory Ocean Park covers around 50 hectares. It has amusement park rides as well as exciting sea lion and dolphin shows. The park also has a cable car from which you can take in amazing views of the vast Pacific.

### Amis Folk Center (阿美民俗中心)



- 📍 No. 25, Xincun Rd., Xinyi Borough, Chenggong Township, Taitung County
- 🚌 From Taitung Railway Station, take a Taiwan Tourist Shuttle bus (No. 8101) following the East Coast Route.

Hualien and Taitung counties have more indigenous people than any other county in Taiwan and the Amis are the largest group. The annual Harvest Festival, held in July and August each year, is the grandest event on the festival calendar of the Amis. To appreciate the charm of the indigenous people of eastern Taiwan and see an indigenous village a visit to Amis Folk Center in Taitung is highly recommended. The Center has traditional indigenous buildings and grounds for outdoor performances. Visitors can learn about Amis traditional weaving and experience the tribe's passion, craft skills, and innate singing ability.

..... Taitung County .....

## Sanxiantai (三仙台)

➤ From Taitung Railway Station, take a Taiwan Tourist Shuttle bus (No. 8101) following the East Coast Route.



A special landscape made up of a small offshore island and coral reef coast, Sanxiantai is the best-known scenic spot on the east coast. The island can be reached on a beautiful 320-meter-long wave-shaped bridge. The island has scenery featuring marine erosion and many kinds of coastal plants. Walking on the well-planned trail, you can enjoy local ecology and geological sights. Fish are plentiful in the waters here, making Sanxiantai a popular place for fishing from the rocks. The East Coast is the first place to see daylight on the main island of Taiwan. On New Year's Day every year an event is held here to welcome the first light of the new year, attracting many people from far and wide.

## Zhiben (知本)

➤ Take a train to Zhiben Station or take a train to Taitung Station and take a bus to Zhiben from there.



Zhiben is the most famous hot-spring area in eastern Taiwan. The slightly alkaline sodium bicarbonate spring water here is clear and mineral-rich. After bathing in the water, your skin becomes especially soft and smooth. As long as 100 years ago, it was the most famous hot-spring area in Taiwan alongside Beitou in Taipei. There are many hot-spring hotels located along Zhiben River. As well as enjoying a hot-spring bath in a hotel guestroom, you can also make use of individual bathhouses. In addition to hot-spring bathing, Zhiben also has the Zhiben Forest Recreation Area, ideal for hiking, bird watching, and butterfly viewing. Stroll along forest trails, breathe in the refreshing air, and enjoy the tranquility and beauty of the forest.

..... Taitung County .....

## Jinzun Recreational Area (金樽遊憩區)

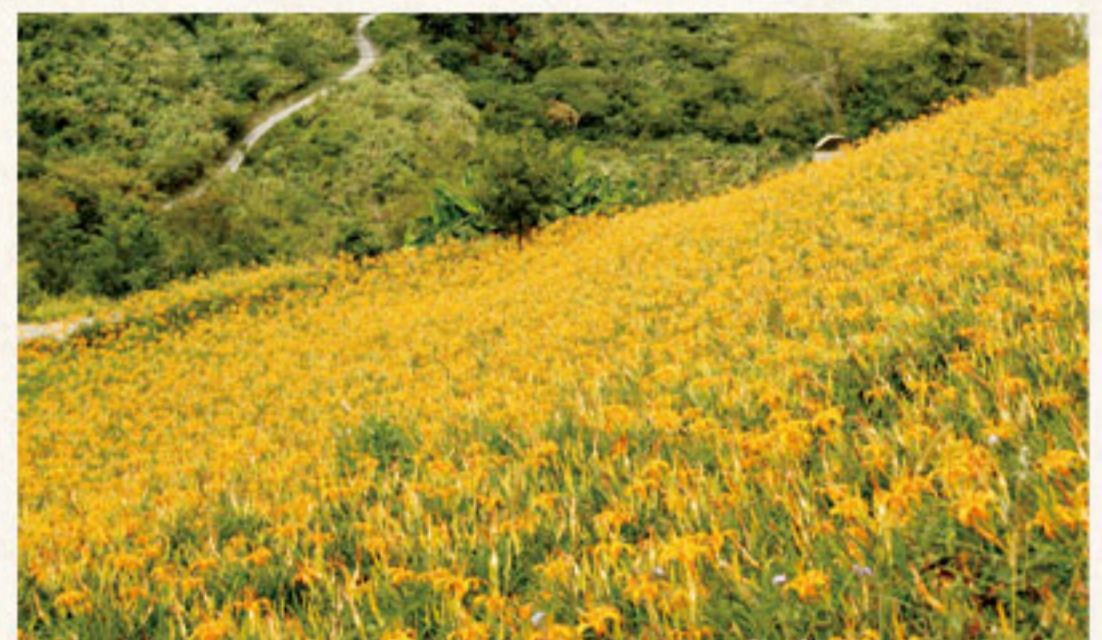
➡ From Taitung Railway Station, take a Taiwan Tourist Shuttle bus (No. 8101) following the East Coast Route.



The stretch of coast between Jinzun and Donghe should not be missed by visitors to the coast of Taitung. Jinzun (lit. "golden wine container") was so named owing to its shape resembling a goblet. It has a land-tied island and three kilometers of sandy beach. Jinzun is a popular place for surfing. Affected by the northeastern monsoon in winter, a large amount of sand accumulates here, creating waves that make Jinzun ideal for surfing. It recently became an Asian Surfing Championship-certified competition venue. An international surfing open competition is held in November annually attracting top surfers from around the world. ————— ◆

## Taimali (太麻里)

➡ Take a train to Taimali Station. Hire a cab to get to the mountain and back. During the daylily blooming season a shuttle bus service might be available.



Taimali means "a place where the sun rises" in the local indigenous language. The sunrise here is regarded as one of the most beautiful sights on the entire East Coast. The long and winding coastline has numerous places perfect for viewing the daybreak. An event is held on the morning of New Year's Day every year to welcome the first light of the new year. Viewing orange daylilies is also an important tourist activity at Taimali. Mt. Jinzhen is the main orange daylily growing area of Taitung County and rivals Hualien County's Mt. Liushidan and Mt. Chike. A sea of orange daylilies can be viewed from July through October every year, adding color to the mist-shrouded mountain peak and attracting large numbers of visitors. After viewing the orange daylilies, visit a local leisure farm to enjoy tasty dishes made using this flowering plant.

..... Taitung County .....

## Tiehua Village (鐵花村)

- 📍 No. 26, Ln. 135, Xincheng Rd., Taitung City, Taitung County
- 🚌 From Taitung Railway Station, take a Taiwan Tourist Shuttle bus (No. 8101) following the East Coast Route and get off at Taitung Bus Station.



Located next to the Railway Art Village, the buildings of Tiehua Village were once dormitories of the Taiwan Railways Administration. It took on a new role as a stage for local musicians after the old railway station was relocated. Since opening in 2010, it has become the most important venue for music performances in Taitung. Small-scale performances are held at the "Blue House" and on the site's grassy area Wednesday to Sunday. This is a good place for enjoying live music and a meal in the evening. Markets are regularly held on weekends with vendors selling a variety of handmade craftworks.



## Taitung Seaside Park (台東海濱公園)

- 🚌 From Taitung Railway Station, take a Taiwan Tourist Shuttle bus (No. 8101) following the East Coast Route and get off at the Forest Park bus stop.



Taitung Seaside Park offers close-up views of the Pacific Ocean and has become a popular downtown leisure spot in Taitung. The park has trails, viewing platforms, and installation artworks that merge with the natural landscape. The expansive uninterrupted view makes the park an ideal place to watch the sunrise. Next to the seaside park is the Forest Park, which has a large expanse of Polynesian Iron Wood nicknamed the "black forest," which is suited to bike-riding. There are three lakes in the park and the beautiful sight of the forest reflected in the still water of the lakes is a popular subject for photographers.

..... Recommended Itinerary .....

## Round the Island – 8 Days, 7 Nights

DAY1



Arrival/Taipei: city tour

DAY2



Taipei: CKS Memorial Hall →  
Hualien

DAY3



Hualien: Taroko Gorge →  
Taitung

DAY4



Taitung → Kaohsiung: city  
tour, Love River cruise

DAY8

Taipei: city tour/  
departure

DAY7



Taichung → Taipei: National  
Palace Museum, Taipei 101,  
night market

DAY6



Chiayi → Nantou: Sun Moon  
Lake → Taichung: city tour

DAY5



Kaohsiung →  
Chiayi: Alishan

..... Recommended Itinerary .....

# Taiwan West Coast – 5 Days, 4 Nights

DAY1



Arrival/Taipei: city tour

DAY5



Kaohsiung →  
Taipei: departure

DAY2



Taipei: city tour



DAY3



Taipei → Tainan: city tour → Kaohsiung



DAY4



Kaohsiung: city tour, Love River cruise



..... Recommended Itinerary .....

## North Coast Trip – 4 Days, 3 Nights



DAY1



Arrival/Taipei: city tour



DAY4

Taipei: city tour/  
departure



DAY2



Taipei → New Taipei City: Yeliu, Jiufen



DAY3



Yangmingshan or Beitou: → National Palace  
Museum → Yuanshan





..... Recommended Itinerary .....

# East Coast Trip – 5 Days, 4 Nights



DAY1



Arrival/Taipei: city tour



DAY5

Taitung →  
Taipei: departure

DAY2



Taipei → Yilan: Dongshan River, Jiaoxi

DAY3



Yilan → Hualien: Taroko Gorge, Qixingtan

DAY4



Hualien → Taitung: Chishang, Tiehua Village

## Popular Gifts

### ● Pineapple Cake

Cakes and biscuits have long been popular gifts bought by visitors to Taiwan for family and friends, with pineapple cake at the top of the list. Easy to buy, it comes in exquisite packaging that makes it very suitable as a gift.



### ● Nougats

Increasingly popular with visitors, nougats are regarded as "the next big thing" in terms of must-buy gifts for foreign visitors, after pineapple cake. The enticing milk and nut aroma is the main reason for the popularity nougats.



### ● Dried and Preserved Fruit

Taiwan produces a large amount of excellent fruit. Superior processing techniques are used to turn some of this fruit into dried and preserved fruit, locking the flavors inside. The sweet and sour taste of this dried and preserved fruit is simply delicious.



### ● Taiwan Tea

Taiwan's tea is renowned worldwide. It has many varieties, each with its own fragrance and taste.



#### 📍 Where to buy?

Pineapple cake, dried fruit, nougats, and tea are popular gifts taken home by visitors to Taiwan. They can be bought in almost all the main shopping areas. For one-stop purchases, a visit to a department store or large supermarket is suggested.

## ● Milk Tea (Chun Cui He)

Milk tea is not unique to Taiwan but Chun Cui He tea has achieved strong overseas sales due to the fact that its bottle resembles that of a skin-care product.



### 📍 Where to buy?

Chun Cui He can be bought in convenience stores that can be found all over in Taiwan. To collect different styles of Chun Cui He bottles, go to a large supermarket or hypermarket.

## ● Face Masks

Taiwan manufactures over 100 million face masks every year. Good in quality and low in price, and also suited to Asian skin, they are popular with locals and international visitors alike.



### 📍 Where to buy?

It's easy to buy open-shelf, low-price face masks in Taiwan. Apart from hypermarkets, drugstores like Cosmed and Watson's also have a full range of the products.

## ● Ceramics

Taiwan's ceramic products aren't all high-class pricey brands such as Franz; there are also many low-priced items to choose from. In recent years, ceramics studios have also offered DIY experiences of the process of making ceramics, allowing you to create your own unique souvenirs.



## ● Glass Art Products

Taiwan glass art studios, especially Liuli Gongfang and tittot, are well-known internationally for their exceptional craftsmanship. There are museums and tourist factories focused on glass around Taiwan, including in Tamsui, Hsinchu, and Changhua, where visitors can also take part in DIY activities.



### 📍 Where to buy?

At major department stores you will find special-brand counters selling ceramic and glass art products. Some brands also operate their own stores.

# Visa Information for Taiwan

## I. Visa-exempt Entry

At present Taiwan provides visa-free entry and 30-day stay to citizens of more than 40 countries including Brunei, Malaysia, Singapore, Thailand, and the Philippines in Southeast Asia. The following requirements must be met by visitors:

- (1) Holding an ordinary passport with over 6 months validity.
- (2) Holding a return airplane (boat) ticket or an airplane (boat) ticket and visa for the next destination.
- (3) No criminal record, with relevant inspections conducted by Taiwan's entry/exit airport or port inspection units.

The above conditions are the same for holders of emergency or temporary passports, who can apply for a landing visa at an international airport when arriving in Taiwan. The maximum time of stay is 30 days.

For the list of countries whose citizens can enjoy visa-exempt entry into Taiwan ►

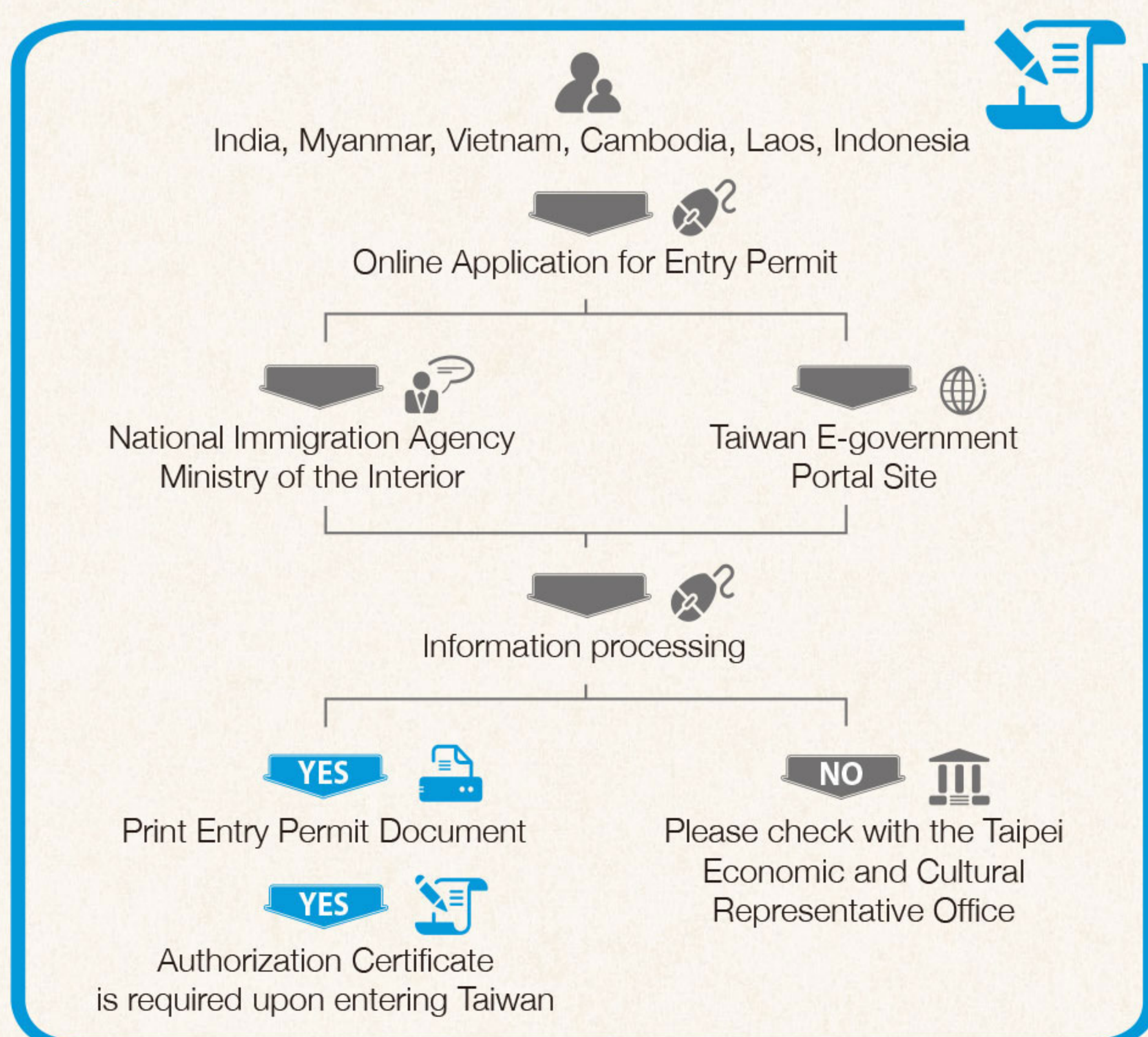


## II. Online Registration

Nationals of South and Southeast Asian countries (including India, Indonesia, Myanmar, Vietnam, Cambodia, and Laos) are now eligible for visa exemption for a stay of up to 30 days in Taiwan if they have valid visas (including electronic visas), resident permits, or permanent resident permits (rights) from the following countries: USA, Canada, UK, Japan, Australia, New Zealand, South Korea, and countries of the European Union; or they have had visas issued by the Republic of China within the last ten years (not including working visas) and have no criminal record. To apply for the visa exemption program. To apply for the visa exemption program, visit

[https://niaspeedy.immigration.gov.tw/nia\\_southeast/](https://niaspeedy.immigration.gov.tw/nia_southeast/)

### • Application Flowchart



### III. Electronic Visa

At present, citizens of over 30 countries can apply for electronic visas, including Saudi Arabia and Turkey. Business people from countries including India, Sri Lanka, Bangladesh, Nepal, Bhutan, and Pakistan can also apply if they are recommended by the local Taiwan External Trade Development Council (TAITRA) office in their country of residence. Electronic visas are valid for three months and allow a maximum stay of 30 days. To be eligible, an ordinary passport valid for more than six months must be held.

#### • Application Process

Fill in a visa application form online → send in the application → pay by credit card → wait for approval notification → receive notification e-mail → print out visa and use it to enter Taiwan.



### IV. Group Travelers from Southeast Asian Countries: Easy Steps for Visa Application

Citizens of Indonesia, Vietnam, India, Myanmar, Cambodia, and Laos participating in group tours organized by designated travel agencies, or corporate incentive tours, are exempt from proof of employment and financial resources. Please refer to detailed information on the official website.

#### • Contact Locations

1. Visitors from Indonesia, Vietnam, Myanmar, Cambodia, and Laos can contact the Kuala Lumpur Office of the Taiwan Tourism Bureau

☎ Tel: 60-3-2070-6789

☎ Fax: 60-3-2072-3559

✉ tbrockl@taiwan.net.my

📍 Suite 25-01, Level 25, Wisma Goldhill, 67 Jalan Raja Chulan, 50200 Kuala Lumpur, Malaysia

2. Visitors from India can contact the Singapore Office of Taiwan Tourism Bureau.

☎ Tel: 65-6223-6546/7

☎ Fax: 65-6225-4616

✉ tbrocsin@singnet.com.sg

📍 30 Raffles Place, Chevron House, #10-01, Singapore

### V. Ordinary Visa

Fill in the required information and click "submit", print out the application form and deliver it to the designated place of application within 30 days.



#### • More Travel Information

English ▶



FB of Taiwan Tourism Bureau, Kuala Lumpur Office ▶



# Foreign Travelers VAT Refund

- **Receive VAT Refunds for Purchases of NT\$2,000 or above. Easy Application!**

- **Requirements for VAT Refund:**


1. Foreign travelers holding passports or travel documents from countries other than the R.O.C. or R.O.C. passports without personal ID numbers attached.
2. Foreign travelers who make purchases of at least NT\$2,000 on the same day from the same Tax Refund Shopping (TRS)-posted store are eligible for a refund of the 5% VAT paid on those purchased goods. To claim the refund, the travelers must apply at the port of their departure from the R.O.C. within 90 days following the date of purchase, and they must take the purchased goods out of the country with them.

- **Tax Refund Locations**

Foreign travelers may receive their tax refunds at one of the following three types of stations displaying the "Taiwan VAT Refund" logo:




1. Tax Refund Service Counters or "Kiosk E-vat" machines at international airports and harbors.
2. Stores approved for on-site small-amount tax refunds, where the traveler makes purchases totaling up to NT\$24,000 on a single day.
3. Urban duty-free shops with designated counters for tax refund services.


 [www.taxrefund.net.tw](http://www.taxrefund.net.tw)




To provide friendly, convenient, and thoughtful services to travelers, there are travel service centers located in main airports, metro stations, train stations, national scenic areas, and visitor centers at important sites in cities and counties throughout Taiwan. Visitors can expect immediate help from Mandarin-, English- or Japanese-speaking staff members. It is the goal of the Taiwan Tourism Bureau and affiliated city and county organizations, to create a tourist-friendly environment and improve the quality of our services.

- **Pusat Informasi Turis, Taiwan Taoyuan International Airport**

 +886-3-398-2194 (Terminal 1)    +886-3-398-3341 (Terminal 2)

 Terminal 1: 7am-11:30pm    Terminal 2: 5:30am-12 midnight

- **Pusat Informasi Turis, Taiwan Kaohsiung International Airport**

 0800-252-550

- **Free 24-Hour Travel Information Hotline**

The travel hotline (0800-011-765) operates 24 hours a day, year round, providing travelers with immediate travel advisory services. There are Mandarin-, English-, Japanese-, and Korean-speaking staff available.

**Travel hotline:  
0800-011-765**



# Common Chinese Phrases

---

您好 (Ni Hao)

Hello

---

謝謝 (Xie Xie)

Thank you

---

不客氣 (Bu Ke Qi)

You are welcome

---

多少錢 (Duo Shao Qian)

How much?

---

再見 (Zai Jian)

See you

---

○○○在那裡？ (○○○ Zai Na Li?)

Where is ○○○？

---

請帶我去○○○ (Qing Dai Wo Qu ○○○)

Please take me to ○○○

---

我不吃豬肉 (Wo Bu Chi Zhu Rou)

I do not eat pork

Published by Taiwan Tourism Bureau

Add: 9F, No. 290, Zhongxiao E. Rd., Taipei City 10694

Tel: +886-2-2349-1500

E-mail: [tbroc@tbroc.gov.tw](mailto:tbroc@tbroc.gov.tw)

Website: <http://taiwan.net.tw>

Date: June, 2017



**Taiwan**

THE HEART OF ASIA



9 789860 526424